

 **Dorsal**<sup>®</sup>  
il riposo di natura



Dorsal: regenerates the body and caresses the soul.

*The body is a treasure trove, with its rules, times, secrets.  
It puts us in touch with the world and others.*

*Getting to know and taking care of our body  
also means accessing to our soul, mind and relationships.*



## Learn to sleep better.

*Today we know that the quality of life is based above all on a good night's sleep. No day goes by without science showing us how sleeping well keeps us well.*

*Sleep refreshes us and allows us to face the day cheerfully.*

*To facilitate sleep and the regeneration of our thoughts, the first thing to do is to choose a suitable personalized Bed System. Thanks to Dorsal, there will be nothing more natural than taking care of your body.*

*For us at Dorsal this is a vocation we have been pursuing for years; for you it will be a discovery: good sleep is a caress for the soul.*



## Our Bed System.

*Comfortable and cocooning to facilitate sleep but hygienic and anatomical to take care of your spine. These are the features of the ideal bed.*

*A ten-year research has shown that equilibrium between the parts that compose a bed is essential, because even the best mattress is inefficient if it is not in harmony with the anatomical slatted-base.*

*Mattress, slatted-base and pillow must work together to sustain the spine, follow its natural shape and react with elasticity to all types of pressure.*

*Only in this way do we get the effect of supporting the dorsal vertebrae and stretching the lumbar vertebrae, which releases the spine from the body's weight. This is the best and healthiest condition for sleep, the one developed by the Dorsal Bed System.*



**Dorsal**

**Dorsal Wellness Point**

**Corsi di Formazione  
Training**

**Certificazioni  
Certifications**

**Controllo qualità  
Quality control**

**Sostenibilità ambientale  
Environmental sustainability**

**Comunicazione  
Communication**

**Conformità  
alla Direttiva Europea  
Conforms to European Directive**

**Partnership**

DorsalStudio.

*DorsalStudio is our way of working, applied to a search for increasingly performing solutions, towards sustainability and technological efficiency. DorsalStudio is a laboratory where the demands of consumers and today's technical potential and technology come together.*

*Where accurate laboratory tests are performed and where we promote cooperation with doctors and specialized physiotherapists from A.I.Fi. (The Italian Physiotherapists Association).*

# Studio

Incontri  
aperti al pubblico  
*Public meeting*

Test ergonomici  
*Ergonomic Tests*

Brevetti  
*Licences*

Ricerca e Sviluppo  
*Research & Development*

Catas

Associazione  
Italiana Fisioterapisti  
*Medical Specialists*

*We are aware of the importance of promoting and spreading the culture of rest. This is why we organize training courses and meetings open to the general public, where all the secrets of a good night's sleep are revealed.*

*Transparency is important for us. That's why we want to show you the origin of all our products. Then you can appreciate their quality and explore their secrets and distinguishing features.*



Made by Us

Our secret is people,  
100% Italian craftsmanship.

*Our vocation contains a deep awareness  
of contributing to the quality of life.*

*Since 1932 we have been carefully  
studying the human body in order to design and  
produce anatomical slatted-bases, mattresses and pillows  
with high standards of safety, ergonomics and hygiene*

*We were the first in Italy to introduce a wooden slat system,  
thus contributing to the spreading of a new concept of  
sleep. It was the beginning of a long journey through  
excellence. Today Dorsal products are medical devices  
whose value is acknowledged and certified.*



*Dorsal provides typically Italian craftsmanship, which means that attention to details and quality products go hand in hand with research and innovation.*

*Our production facilities exude the culture of knowing how to do things well: all our products are designed and manufactured entirely in Italy under the strict control of qualified experts who can guarantee absolute quality and refined design*



The choice of living in harmony with Nature.

*Choosing a natural product means  
respect for the environment and human beings.  
We can all change tack to opt for certified quality and safety.*

*Each of us is called to make a little choice that together with others will  
contribute to the recovering of our planet and improving our quality of life.*



*Dorsal production is distinguished by naturalness.*

*We have developed the first mattress in Italy with raw materials from renewable resources: sunflower seed oil and water.*

*Mattresses such as Zefiro, Grand Soleil and Vitalay are now protagonists of what Dorsal has to offer: a new ecological concept of sleeping.*

*Also for anatomical slatted-bases Dorsal uses beech wood slats made of timber from controlled forests that optimize felling and planting.*

*A choice for the environment, an ethical imperative for the good of our planet and human health.*

**Technologies and certifications for naturalness that lasts:**



**UNI EN ISO 9001:2008**

Dorsal became ISO 9001 registered in 2001 and renewed certification in 2003, 2005 and 2007, 2009. Lately has switched to the new 9001:2008. Every level of Dorsal's organization is involved in this quality process, whose final aim is to increase the company's competitiveness and pursue total customer satisfaction.



**MEDICAL DEVICES**

Bed systems (slatted bases, mattresses and pillows) which apply to Class I Medical Device, European directive 93/42/CEE and following articles introduced by directive 2007/47/CE and registered at the Ministry of Health.



**CE**

EC (European Community) declaration of conformity in accordance with Machinery Directive 2006/42/CE. Dorsal is authorized to affix CE Marking, which is applied on all motor-driven anatomical bed bases for the safety and protection of the end consumer. Products with CE marking also come with a user manual.



**CATAS**

Dorsal is a member of the Catas Test Laboratory (used for tests on slatted bed bases and mattresses).



**C.A.R.M.E.N.**

The support of this important centre, coordinator for renewable resources with headquarter in Bavaria, testifies the use of such resources and a full environmentalist consciousness of Grand Soleil that originates from natural oils.



**HOHENSTEIN INSTITUTE**

Specific tests have been run on Tubes both thermo response and how controlled the climate is inside the mattress but also the ability of dispersing humidity. Also the Naturargento cover (silver threads) was tested with the same institute.



**UNIVERSITÄTSKLINIK ERLANGEN**

All Vitalay cores have been tested for absence of anallergic reaction to human skin.



**W. KLAUDITZ INSTITUT**

German institute where tests of resistance to weight, humidity and breaking are run on the exclusive patented Dynaflex beech slats



**TUV**

German certification agency and quality inspection of production process of beech slats used on Dorsal frames.



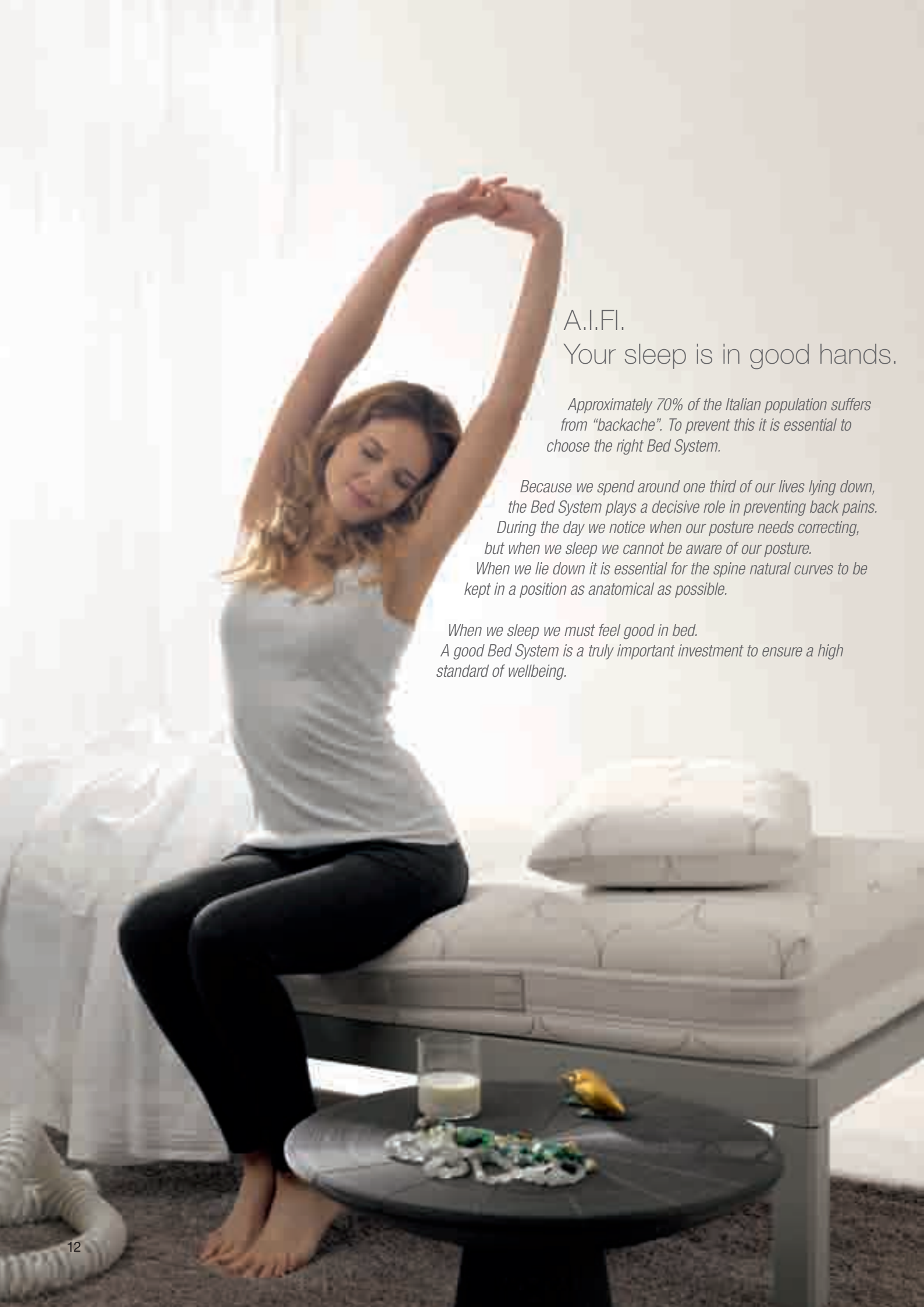
**LGA**

German certification authority and quality inspection of production process of foaming used in Metzeler.



**OEKO-TEX STANDARD 100**

The Oeko Tex Standard 100 (baby products class) provides assurance that the product contains no substances that are harmful to humans and that manufacturing processes are environmentally friendly and CFC-free.



A.I.FI.

Your sleep is in good hands.

*Approximately 70% of the Italian population suffers from "backache". To prevent this it is essential to choose the right Bed System.*

*Because we spend around one third of our lives lying down, the Bed System plays a decisive role in preventing back pains. During the day we notice when our posture needs correcting, but when we sleep we cannot be aware of our posture. When we lie down it is essential for the spine natural curves to be kept in a position as anatomical as possible.*

*When we sleep we must feel good in bed. A good Bed System is a truly important investment to ensure a high standard of wellbeing.*

# A.I.F.I.

**All Dorsal products are recommended by A.I.F.I., the Italian Physiotherapist Association that is recognised by the Italian Ministry of Health.** These experts in posture of the human body, besides confirming the effectiveness and quality of our Bed Systems, they constantly co-operate with us and offer specific consulting.

This constant comparison year after year has allowed Dorsal to translate scientific knowledge into a series of avant-garde solutions that guarantee healthy regenerating rest. In Italy, out of all the bed systems on sale only those by Dorsal are recommended by the A.I.F.I. and are therefore suitable for providing healthy sleep surrounded by wellbeing. With Dorsal, sleep is in good hands.



Products supported by A.I.F.I.  
the Italian Association of Physiotherapists



In our catalogue you will find useful tips (highlighted by special icon), provided by physiotherapists, about using our products.

Other A.I.F.I. tips for sleeping well and waking up feeling great can be found in the tag on all our products.

## Dorsal Bed System Wellbeing Device

**In the Dorsal Bed System Wellbeing Device**, each individual component works in perfect synergy to sustain the body, to optimize pressure-point distribution, respect the physiological curves of the spine and guarantee a relaxing regenerating sleep.

Dorsal offers you a unique range of its kind: **anatomical slatted-bases, mattresses and pillows, all Class I Medical Devices complying to European Directive 93/42/CEE and later amendments introduced by Directive 2007/47/CE, registered with the Italian Ministry of Health and available in 360 combinations** for a fully personalised bed system.



### Dorsal Wellbeing Devices:

Consult the table on page 154 of the catalogue to find out how to advise customers on the ideal Bed System.





## DWP

We improve your world and organize your space.

*The point of purchase (POP) is the place where the first real contact with consumers takes place. Designing it effectively means assessing its structural and merchandising characteristics to create a comfortable productive purchasing atmosphere.*

*Communication also means promoting a product culture, creating intimacy and empathy with the customer, setting up display areas where the customer can experience trust and positive emotions. This is the purpose of Dorsal Wellness Point, a communication system specially designed by Dorsal for points of sale.*

*Floor Plan*

*Catalogue/Price list*

*Catalogue Pocket*

*DVD video*

*Samples cases*

*Samples*

*of slats/fabrics*

*Acid green carpet*

*Sample mattresses*

*Slatted frames displays and Pillow stacks*

*Footrest mat*

*Sunflowers*

*Display/Gadget*

*Display stickers*

*Events/Trade Fairs*

*Panels on self-supporting structures*



*We provide a full customized consultancy service: from planning a point of sale, trade fair or promotional event, to staff training through meetings organized in our headquarter or at your shop*

*DWP does not just mean partnership with Dorsal, but sharing an idea with points of sale and pursuing a common aim together.*

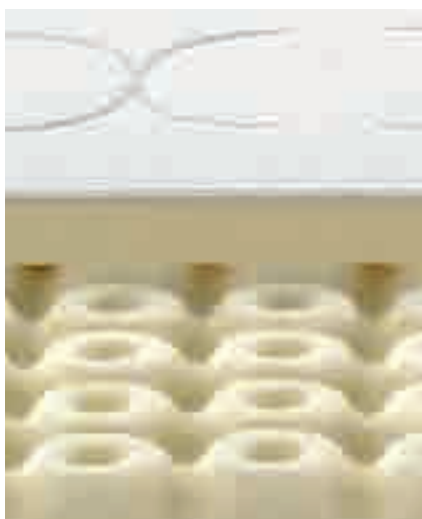
*DWP also means to join forces, specialize and qualify shops, offer consumers an exclusive purchasing experience.*





## Covers

- 18. In details
- 20. Thermic
- 22. Naturargento
- 24. Namboo
- 25. Sleep Dry
- 26. Green cotton
- 27. Melange



## Soft Care

The first balanced pressure filling.  
All you need is a flower for absolute comfort

Innovation is the distinguishing feature of Soft Care: the first balanced pressure filling. Part of the Grand Soleil family, based on natural oils and water, is a special filling material that can ease the discomfort deriving from too much compression and **guarantee uniform distribution of body pressure.**

Used in quilting for mattresses and pillows, the open cell structure of **Soft Care makes mattresses particularly breathable** and rapidly disperses humidity, ensuring a perfect microclimate.

Soft Care is the only foam for filling with a honeycomb structure. **Machine washable at 60° it guarantees a constant fresh hygienic bed.** Besides its support function, Soft Care **gives exceptional sensation of comfort.** Soft Care filling is used for the Dorsal range of covers **and now also comes with cutting edge Air Flow technology.**

## Choose your comfort

*The right mattress is the one that incorporates the physical characteristics and sleeping habits of each individual. To choose "your own" mattress it is essential to measure the comfort you seek.*



At Dorsal we know that such comfort comes from the synergy of two fundamental factors: the cover and co-ordination with the internal part of the mattress.

Dorsal is distinguished by its offer of a wide assortment of extremely refined covers. The smallest detail of any of our fabrics is treated with care, they are pleasant to touch and feature decorative inserts. Our covers can adapt to all needs, such as non-allergenic, breathable,

heat regulating and natural.

All Dorsal fillings are selected and exclusive and covers come with innovative top performance quilting.

All Dorsal mattresses come with removable machine washable covers for total hygiene.



## Thermic

### Temperature regulator

Silvery decorations distinguish the attractive design of Thermic, an elegant fabric with a technological heart.

Its refined look is reminiscent of the bed linen of the past, but Thermic can also reinstate the microclimate of the mattress.

**It adapts dynamically to body temperature and offsets any excess heat and perspiration because it is treated with natural vegetable extracts, including the birch tree, which is a powerful hygienizing and hydrating factor.**

Thermic fabric is processed with an **exclusive volumetric three-dimensional method that allows it to provide a comfortable climate** with maximum transpiration and heat control.

Thermic helps to avoid those unpleasant feelings of overheating and perspiring during the night so that you can enjoy a truly refreshing sleep and an overall sensation of wellbeing.

## Air Flow

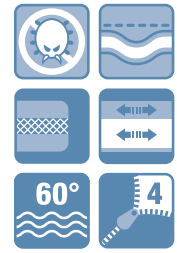
### a new generation of covers

Dorsal Air Flow is a new concept of extremely comfortable covers without quilting.

**Its innovative features increase the airflow and remove humidity to give a sensation of freedom.**

Air Flow technology fixes the fabric and Soft Care filling into a single element which produces a mattress with a clean look.

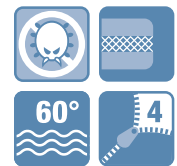
## Thermic Air Flow



- Thermic cover with three-dimensional processing based on vegetable extracts
- Soft Care filling on both sides; provides excellent transpiration and reduces pressure points to a minimum, producing unbeatable comfort.
- Air ventilation system along the edges of the mattress.
- Air Flow technology without quilting.
- The practical zip on the four sides of the cover makes it fully removable and the two parts washable separately.

		190 / 195 / 200 cm						Custom size calculator cm <sup>2</sup>
80 85	90	100 120	140	160 165 170	180			
370	414	537	703	740	828	0,028		

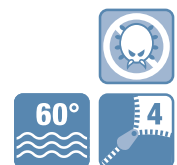
## Thermic Klima



- Thermic cover with three-dimensional process based on vegetable extracts.
- Klima 500g/m<sup>2</sup> on both sides, with good heat regulating properties provided by three layers: a layer of Klima in contact with the body to ensure dynamic heat regulation, inside the natural freshness of cotton, and on the bottom a non allergenic fibre.
- Air ventilation system along the edges of the mattress.
- Deep buttoned (Capitonné) quilting.
- The practical zip on the four sides of the cover makes it fully removable and the two parts washable separately.

		190 / 195 / 200 cm						Custom size calculator cm <sup>2</sup>
80 85	90	100 120	140	160 165 170	180			
400	448	580	760	800	896	0,030		

## Thermic Sensitive



- Thermic cover with three-dimensional process based on vegetable extracts.
- Non-quilted cover: exalts the sensations and quality of the different internal structures of the mattress.
- The practical zip on the four sides of the cover makes it fully removable and the two parts washable separately

		190 / 195 / 200 cm						Custom size calculator cm <sup>2</sup>
80 85	90	100 120	140	160 165 170	180			
145	162	210	276	290	324	0,011		



## Naturargento non-allergenic

Naturargento is one of the most popular fabrics in the battle against allergies; due to its technology it is unique of its kind.

**Valuable silver is incorporated by nanotechnology both as a thread in the weave of the fabric and as silver ion particles.**

Naturargento is a real bodyguard during sleep.

### Characteristics of Tencel® fibre

- Natural and breathable.
- As it absorbs 50% more humidity than cotton it guarantees the ideal conditions for healthy sleep.
- Tencel® fibre ecological and biodegradable. It comes from cellulose and is environmentally friendly.

### Innovative for a host of reasons:

- It is effective against pathogenic germs, hospital germs such as MRSA and great number of bacteria and salmonellas.
- By releasing silver ion particles it renders macrobiotic proteins, bacterial DNA and virus and bacilli inactive.
- It is certified Nano Technology (Hohenstein) as the nano particles are incorporated into the fibre and permanent.
- It prevents bad odour by removing the micro-organisms causing it, ensuring hygiene and freshness.
- Does not contain toxic or harmful substances (dermatologically tested and certified OEKOTEX STANDARD 100).
- Provided with high conductivity, silver helps to disperse electrostatic charges in the environment from, for example: TV sets, radios and mobile phones, to make your sleep more relaxing

## Naturargento Soft Care



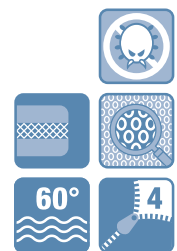
- Natural cover in Tencel® and Silver.
- Soft Care filling on both sides reduces pressure points, favours correct blood circulation and has high breathability as open-cell structure.
- Air ventilation system along the edges of the mattress.
- Differentiated quilting according to zone
- The practical zip on the four sides of the cover makes it fully removable and the two parts washable separately.

		190 / 195 / 200 cm				Custom size calculator cm <sup>2</sup>
80 85	90	100 120	140	160 165 170	180	
370	414	537	703	740	828	0,028

## Naturargento Cotton



**DORSAL WELLBEING DEVICES:**  
NATURARGENTO COTTON IS AVAILABLE  
AS A MEDICAL DEVICE.  
SEE PAGE 154.



- Natural cover in Tencel® and Silver
- Zeolites cotton, 500gr/m<sup>2</sup> on both sides with anti-microbe and anti-bacteria properties.
- Air ventilation system along the edges of the mattress.
- Differentiated quilting according to zone.
- The practical zip on the four sides of the cover makes it fully removable and the two parts washable separately.

		190 / 195 / 200 cm				Custom size calculator cm <sup>2</sup>
80 85	90	100 120	140	160 165 170	180	
290	325	421	551	580	650	0,022



## Namboo 100% natural

Namboo is a fabric that encapsulates Dorsal's environmentally friendly commitment. Our new **Namboo fabric is 100% natural, made of bamboo fibre and cotton**, with an even more exclusive pattern for a charming natural style.

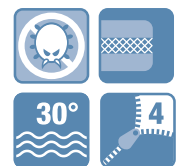
Bamboo fibre has always been well known for its high capacity to evaporate perspiration and absorb humidity from the environment and human body, creating the ideal microclimate for a truly relaxing sleep.

In addition, bamboo fibre contains honey pectin, which has skin moisturizing, nourishing and regenerating properties, as well as an antibacterial and natural deodorant function.

These fantastic features combine with those of cotton, appreciated since early times for its special capacity to provide a feeling of freshness.

**Our new Namboo fabric is enhanced by a sophisticated but natural anti dust mite treatment known as "Green First", based on essential oil extracts of lemon, lavender and eucalyptus.**

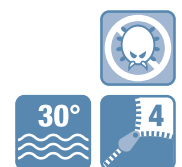
## Namboo Summer / Winter



- Cover in 100% natural fabric in bamboo fibre and cotton with Green First anti dust mite treatment.
- Filling in non-allergenic cotton with 500g/m<sup>2</sup> silver zeolites on the summer side and new virgin wool with 500g/m<sup>2</sup> silver zeolites on the winter side. Anti-microbial with anti-bacterial properties.
- Air ventilation system along the edges of the mattress.
- Differentiated quilting according to zone.
- Removable washable cover; the practical zip on the four sides allows the two parts to be washed separately.

		190 / 195 / 200 cm					Custom size calculator cm <sup>2</sup>
80 85	90	100 120	140	160 165 170	180		
290	325	421	551	580	650	0,022	

## Namboo Sensitive



- Cover in 100% natural bamboo fibre and cotton, with Green First anti dust mite treatment.
- Unquilted cover exalts the sensations and quality of the different internal structures of the mattress.
- Removable washable cover; the practical zip on the four sides allows the two parts to be washed separately

		190 / 195 / 200 cm					Custom size calculator cm <sup>2</sup>
80 85	90	100 120	140	160 165 170	180		
145	162	210	276	290	324	0,011	



## Sleep Dry® Breathable and fresh

A new design, a new quilting patter for this classic Sleep Dry cover.

The cover stays fresh and dry thanks to its revolutionary Sleep Dry hydrophilic cotton. Moisture is normally formed during sleep. A special manufacturing technique enables Sleep Dry fabric to disperse and spread moisture over the entire cover surface, humidity evaporates quickly which ensure a fresh and ideal sleeping environment that also preserves the mattress.

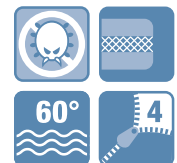
## Sleep Dry® Soft Care



- Sleep Dry breathable cover.
- Soft Care filling on both sides reduces pressure points, favours correct blood circulation and has high breathability as open-cell structure.
- Air ventilation system on perimeter.
- Differentiated quilting according to zone.
- Completely removable cover thanks to a practical zipper on all four sides.

		190 / 195 / 200 cm					Custom size calculator cm <sup>2</sup>
80 85	90	100 120	140	160 165 170	180		
290	325	421	551	580	650	0,022	

## Sleep Dry® Cotton



- Sleep Dry breathable cover.
- Zeolites cotton, 500gr/m<sup>2</sup> on both sides with anti-microbe and anti-bacteria properties.
- Air ventilation system on perimeter.
- Differentiated quilting according to zone.
- Completely removable cover thanks to a practical zipper on all four sides.

		190 / 195 / 200 cm					Custom size calculator cm <sup>2</sup>
80 85	90	100 120	140	160 165 170	180		
220	246	319	418	440	492	0,017	



## Green Cotton® eco-sustainable

Green Cotton is the answer to the growing demand for natural renewable raw materials produced by environmentally friendly processes that guarantee humane working conditions.

**Green Cotton fabric comprises mainly hand-picked ecological pesticide-free cotton that provides all the benefits of top quality cotton, such as comfort, breathability and freshness.**



- Green Cotton cover.
- Filling in 350 g/m<sup>2</sup> non-allergenic fibre on both sides.
- Differentiated quilting according to zone.
- Removable washable cover; the practical zip on the four sides allows the two parts to be washed separately.

		190 / 195 / 200 cm					Custom size calculator cm <sup>2</sup>
80 85	90	100 120	140	160 165 170	180		
145	162	210	276	290	324	0,011	



## Melange Non-allergenic

Details make the difference also in the bedroom. Melange is Dorsal's new cover for kids' mattresses. Featuring an ultra modern grey colour, our special Melange fabric gives these mattresses a trendy contemporary look. This cover guarantees maximum hygiene and full protection from allergies.

Melange undergoes **anti microbial treatment that acts directly on the fabric fibres, inhibiting the growth of bacteria due to perspiration and preventing mould that causes bad odours.**

**Its effectiveness against bacteria is extended also to fungi and dust mites, which are the main vehicles for allergies and dermatitis, especially in young people.** Choosing this fabric means total hygiene for a greater and longer lasting feeling of wellbeing and comfort.



- Cover in Melange non-allergenic fabric.
- Filling in 350 g/m<sup>2</sup> non-allergenic fibre on both sides.
- Differentiated quilting according to zone.
- Removable washable cover; the practical zip on the four sides allows the two parts to be washed separately.

		190 / 195 / 200 cm				Custom size calculator cm <sup>2</sup>
80 85	90	100 120	140	160 165 170	180	
180	202	261	342	360	404	0,014



## Zefiro Bed System

- 32. Zefiro Bed System concepts
- 34. Zefiro bed base
- 36. Dorsal Sensity
- 38. Zefiro bed base range
- 40. Zefiro Mattress
- 42. Zefiro Mattress range
- 50. Zefiro pillows





*Zefiro*  
the bed Sistem that breaths





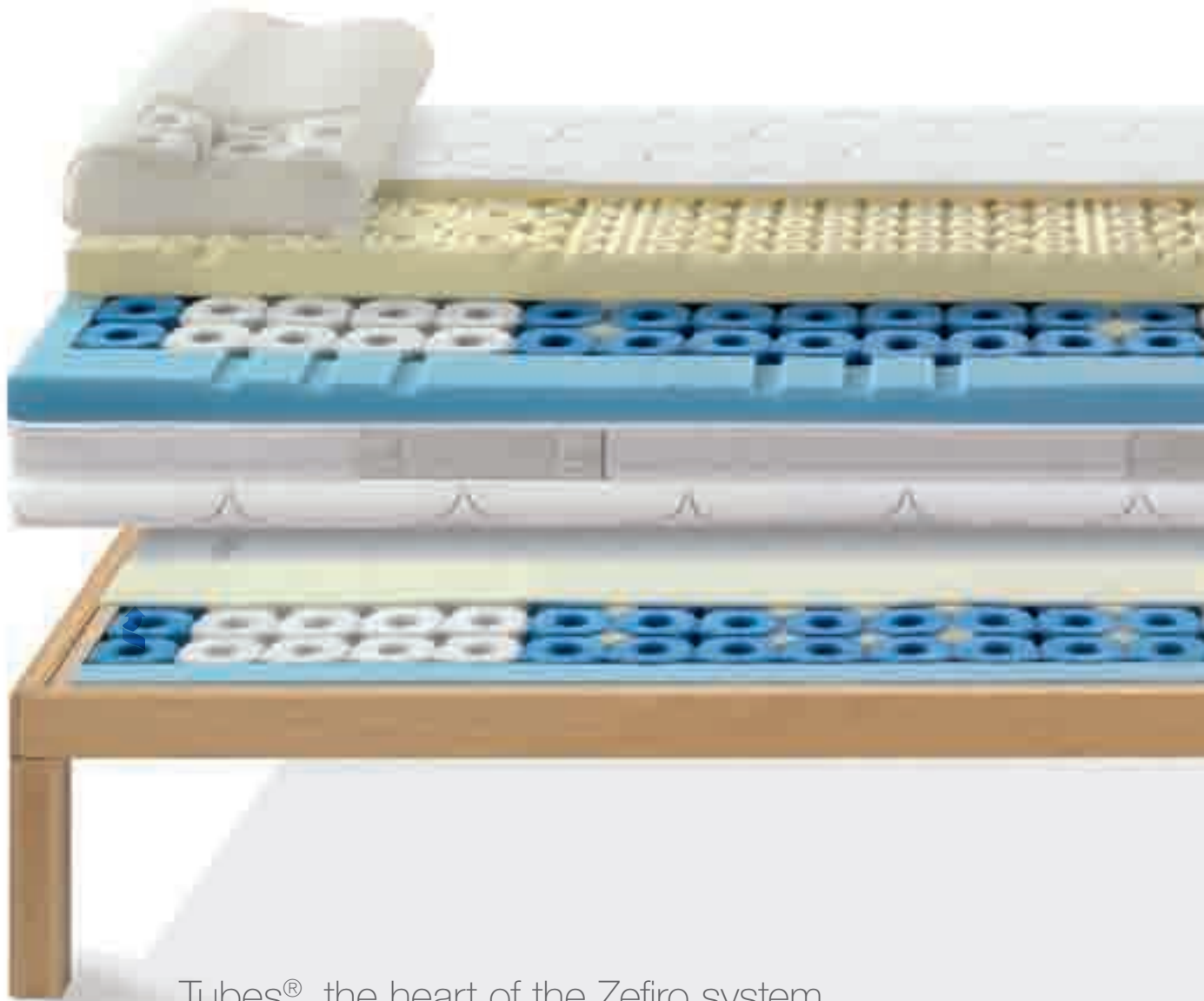
*Imagine yourself wrapped around wellness, feeling harmony blooming.  
This is Zefiro Bed System, that lives, breathes with you.  
Comfortable like a loving embrace, feel alive again every morning.*



## Zefiro, the first bed system concept with elements that work together

*Absolute naturalness, relaxation and comfort: these are the perfect ingredients of the **new Zefiro Bed System comprising three co-ordinated elements: mattress, anatomical base and pillow. All come with the innovative Tubes® technology that rapidly disperses humidity and guarantees the best performance in adapting to the body.***

*Wellbeing multiplied by three, 100% Dorsal quality, design and ergonomics to the maximum.*



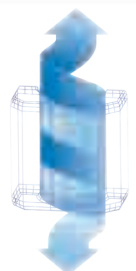
### Tubes®, the heart of the Zefiro system.

Zefiro is Tubes® patented technology: a complex system of tubular elements that make up a grid of ventilation channels designed to rapidly disperse the humidity that forms in the bed system.

**Tubes® are placed so as to work in perfect synergy, through anatomical base, mattress and pillow to form a system that ensures fully ergonomic comfort.**

The elastic and non-deforming Tubes® elements develop perfect counter pressure that stops the body sagging or taking on bad positions. Designed with different degrees of firmness, they are pure ergonomic comfort.

Tubes® technology eliminates metal and frees the body from static electricity. The result is a deep sound sleep.





## Zefiro: the bed system now breathes.

*Important factors for healthy rest, such as a perfect micro climate and ergonomic comfort, contribute to our physical, mental and spiritual wellbeing.*

With this in mind Dorsal presents an absolutely innovative bed system: Zefiro. During sleep every one of us loses in average up to 200 litres of liquid a year in perspiration.

**With the Zefiro bed system body humidity does not linger but it is dispersed through the ventilation channels that guide moisture out of the bed system.**

This also prevents the formation of a favourable environment for bacteria and allergenic agents.

Like a continuous breath Zefiro gives the bed system a feeling of comfort and freshness for a perfectly hygienic micro climate.



Zefiro:  
improve your life  
with the force of the sun.

**Made of raw materials from renewable sources,** the Zefiro Bed System is today the pride of the Grand Soleil line, designed to provide a new dimension of quality to sleep.

Certified free of substances harmful to humans, Zefiro is manufactured by eco-compatible processes (no CFC gas) and is thermo-recyclable.



# Zefiro Anatomical Bed-Base

**Using the Tubes® Technology of the Zefiro mattress, Dorsal has designed an innovative line of anatomical bases that takes advantage of the complex patented Tubes® system as an alternative to the traditional slats.**

Like a constant breath Tubes® technology gives the Zefiro Bed System a feeling of comfort and freshness that provides a perfect micro climate.

Not only wellbeing, but also good looks are guaranteed.

The Zefiro anatomical base is pure Italian design: no technical elements on view, just a highly breathable fabric.

For the first time an anatomical base becomes a design feature, in perfect harmony with any style.



## 1. The solidity of beech plywood

The structure of the Zefiro anatomical base is entirely in selected beech plywood. Zefiro is distinguished by the solidity of the materials used and attention to detail. The innovative features of the corner are a Dorsal's patent. The special line of the feet has also been designed to harmonise with the frame. The finishes available for the Zefiro anatomical base are: natural beech or grey lacquered.

## 2. Air Vent Cover

Smart fabric elegantly covers the technical part of the Zefiro base. Highly breathable, it ensures maximum ventilation between the base and mattress.

## 3. Comfort layer

A breathing comfort layer placed between Tubes® and fabric.

## 4. Tubes® technology

Through its ventilation channels the Tubes® system rapidly disperse humidity away. The colours of the Tubes® elements indicate the different degrees of firmness, studied in perfect synergy with the Zefiro mattress and according to the areas where load is more or less concentrated.

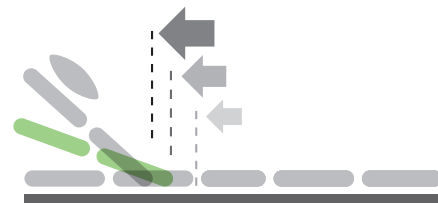
## The new Back Section system.

The Zefiro range of bases comes in traditional single (NA), king and queen versions (MA), as well as a renewed motorised version, RB Back Section.

The new RB base increases the pleasure of using a motorised base; the head has been enhanced with a new backward movement of the spine section, with which to achieve the different positions more comfortably and ergonomically.



zefiro



When moving the Zefiro RB motorised base the aesthetic qualities of the cover used for the internal frame are highlighted.

The colours of the Air Vent fabric co-ordinate with the mattresses and bed linen.

## Air Vent, a stain proof breathable fabric.

Ventilation is one of the essential factors for avoiding the accumulation of humidity inside the bed system and ensuring relaxing sleep. For its new Zefiro base Dorsal uses revolutionary Air Vent fabric. **Small windows created by a unique weaving system allow natural ventilation, increasing the fabric's breathability by up to 50%. Their geometrical distribution all over the base ensures uniform ventilation. The fabric is treated with latest generation Teflon® nanotechnology which makes it permanently water and oil repellent without affecting the fabric's breathability.**



# Dorsal Sensity, let yourself be inspired by wellbeing.

Nowadays people use their bedrooms not only for sleeping, but also as a place in which to relax and spend leisure time. In bed you can read a good book, watch TV, listen to music or play games. On the basis of research into modern living Dorsal has developed Dorsal Sensity.

All the comfort you were looking for to be inspired by wellbeing at any time of the day.

The latest technology and attention to human health, because, to pampered yourself and feel a little spoiled at times, makes you feel good, improves your mood and makes time go by more pleasantly.

The Sensity technologies employed on the Zefiro base are the perfect answer for those who seek authentic wellbeing and choose to sleep with the most advanced comfort and ergonomics. The Zefiro motorised base has a new infrared remote control

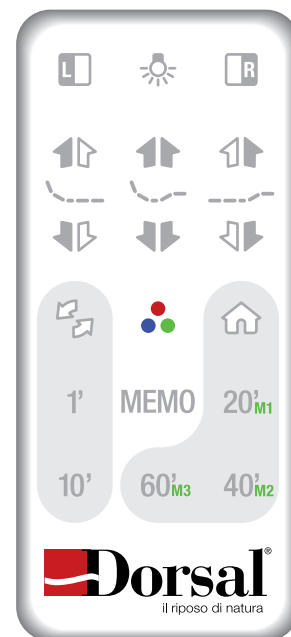
whose technology is enclosed in a shell of modern design and discreet shape.

The remote control manages the main functions of **Dorsal Sensity: Sensity Move** which regulates all the functions that move the motorised base, from the basic moves to the more sophisticated like **Home** and **Memo**.

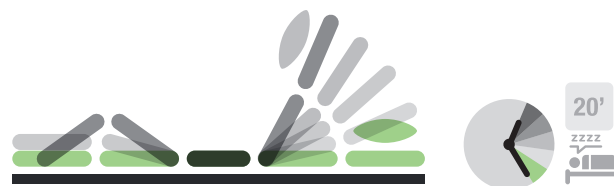
**Sensity LED** regulates the brightness of the lights.

**Dorsal Sensity technology provided with the Zefiro motorised RB base is also available as an option to the full range of Dorsal standard motor bedbases.**

See the accessories section on page 138.



SCALE 1:1



## Sensity Move, the comfort of movement

### Home

Sometimes it's so nice to fall asleep watching TV or reading a book. Dorsal has thought of you with the Home button to let you fall asleep gently. You can choose to return to the flat position after 20', 40' and 60' minutes

### MEMO Memo

It's easy to return to your favourite position: The Memo button can memorize up to three positions to choose as you wish for reading, working on the computer, having breakfast, relaxing...



## Sensity LED, The colour of wellness.

### Light

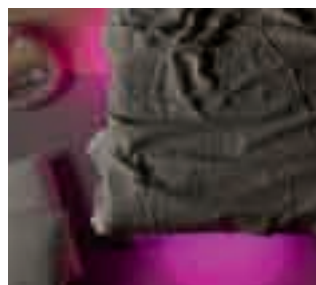
With Sensity LED light is an experience of overall wellbeing, involving body and mind. It acts on the “sensitive” side and transmits equilibrium to the soul. With its variations of magic relaxing light for meditation it lowers tension. The button controls LED illumination and a courtesy light.

### Rotation

There are two rotations of the LED lights: faster when you need energy, slower when you want a soft relaxing atmosphere.

### Colour

You can select your favourite colour to create a scenario with pleasant pastel nuances or brighter shades. You can colour your world with softly or intensely coloured LEDs. Select the harmony of green, the luminosity of yellow when the sky outside is grey, or relax with blue that takes you on a spiritual journey.



## Zefiro Anatomical base

### A simple fundamental revolution.

At Dorsal we have always considered sleep as an essential part of our daily lives. In recent years research and technology have also become interested in the quality of sleep and the results are revolutionising sleeping systems. Zefiro is a protagonist of this revolution and has achieved the bed system you have always wanted. Highly breathable with perfect hygiene, Zefiro is top level comfort and totally environmentally friendly. The Zefiro base is available in natural beech and grey lacquered.



### Zefiro RB Full

- 70x30mm anatomical base in beech wood.
- **Tubes® technology with seven comfort zones.**
- **Air Vent fabric.**
- **Single version with motorised regulation and Back Section system.**
- Complies with the Directive "Machines" 2006/42/ and comes with label and user's handbook.
- Complies with the Directive "Electromagnetic compatibility" 2004/108/ **CE**.
- **Sensity Move and Sensity LED technology.**

190 / 200 cm			
80	85	90	120
BEECH	GREY	BEECH	GREY
1850 €	1920 €	2250 €	2350 €

FEET EXCLUDED

### Zefiro RB Move

- 70x30mm anatomical base in beech wood.
- **Tubes® technology with seven comfort zones.**
- **Air Vent fabric.**
- **Single version with motorised regulation and Back Section system.**
- Complies with the Directive "Machines" 2006/42/ and comes with label and user's handbook.
- Complies with the Directive "Electromagnetic compatibility" 2004/108/ **CE**
- **Sensity Move technology.**

190 / 200 cm			
80	85	90	120
BEECH	GREY	BEECH	GREY
1750 €	1820 €	2150 €	2250 €

FEET EXCLUDED



## Zefiro NA

- 70x30mm anatomical base in beech wood.
- **Tubes® technology with seven comfort zones.**
- **Air Vent fabric.**
- Single version.

190 / 200 cm			
80 85 90			120
BEECH	GREY	BEECH	GREY
720 €	790 €	1100 €	1200 €

FEET EXCLUDED



## Zefiro MA

- 70x30mm anatomical base in beech wood.
- **Tubes® technology with seven comfort zones.**
- **Air Vent fabric.**
- King and queen versions with central reinforcing foot provided.

190 / 200 cm			
160 170		180	
BEECH	GREY	BEECH	GREY
1440 €	1490 €	1580 €	1630 €

FEET EXCLUDED

### Standard feet



#### P80

- Set of 60x60mm feet.
- Natural beech.
- Pack of 4 feet.

FINISHED HEIGHT
H 30
H 35
H 40
168 €



#### P80

- Set of 60x60mm feet.
- Grey lacquered.
- Pack of 4 feet.

FINISHED HEIGHT
H 30
H 35
H 40
168 €

### Optional feet



#### P60

- Set of ø 65mm feet.
- Natural varnish.
- Pack of 4 feet.

FINISHED HEIGHT	
H 30	H 45
H 35	H 50
H 40	
33 €	40 €



#### Connections

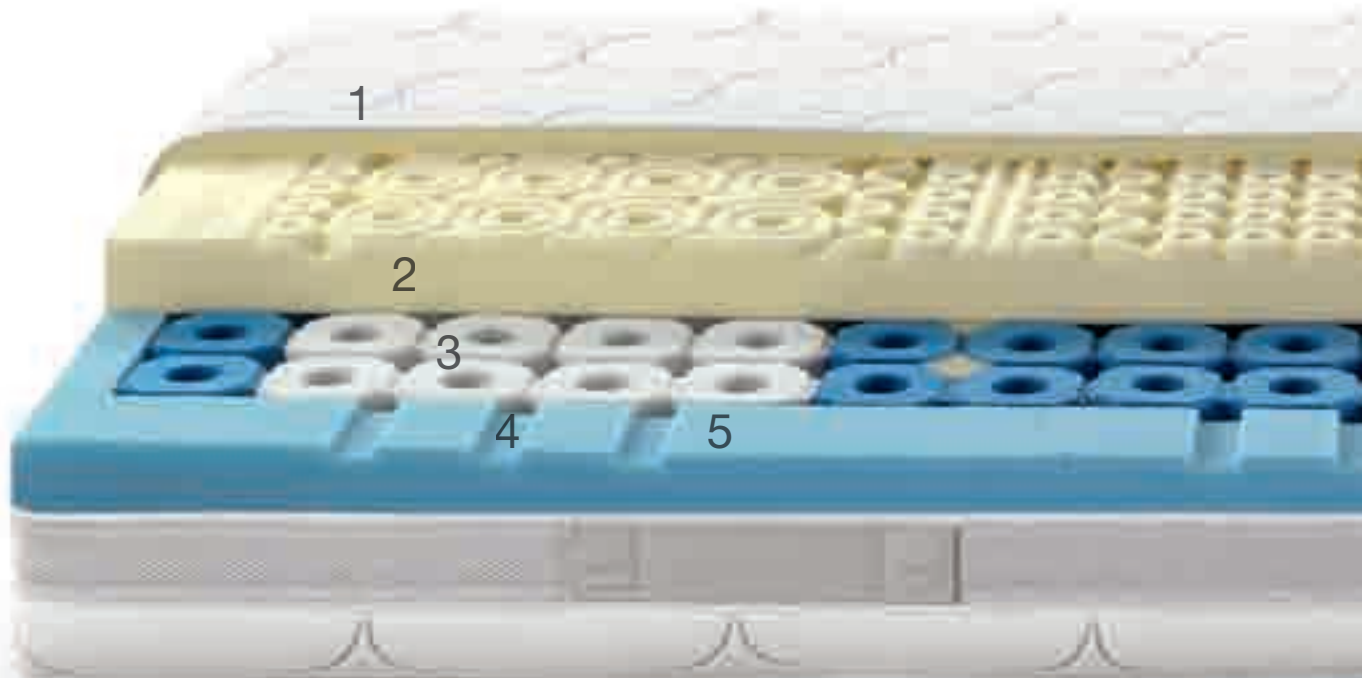
- Central feet to connect single bases.
- Pack of 2 feet.

FINISHED HEIGHT	
H 30	H 45
H 35	H 50
H 40	
34 €	37 €

DORSAL PROVIDES A SERIES OF ACCESSORIES, SEE PAGE 138.

# Zefiro. The mattress that breathes.

*Top class of the Grand Soleil family, it was created to offer a new dimension and quality of rest. Zefiro represents a revolution in bedding and it gives a unique sensation of comfort and freshness for a hygienic micro-climate during your sleep.*



## 1. The cover system

Zefiro can be customized with several covers.

## 2. Comfort layers

Available in Natur Memory, Trio Cell<sup>®</sup>, Duo Cell<sup>®</sup> and with multi-zone system.

The Natur Memory layer is profiled with the latest carving technology that guarantees a differentiated body-zone comfort.

## 3. Tubes<sup>®</sup> technology

The Tubes<sup>®</sup> system uses aeration channels to eliminate moisture quickly. The Tubes<sup>®</sup> tubular elements are coloured according to the degree of firmness. Tubes<sup>®</sup> technology means no more metal inside the mattress and therefore no more static electricity (electromagnetic fields) caused by coils, resulting in deeper and more restful sleep.

## 4. Lateral air channels

They work in synergy with the Tubes<sup>®</sup> technology for a better air ventilation.

## 5. Mattress perimeter

Strong and reinforced support on edges.





**DORSAL WELLBEING DEVICES:**  
ZEFIRO 108 MEMORY IS AVAILABLE  
AS A MEDICAL DEVICE.  
SEE PAGE 154.



**TUBES®: THE PERFECT CLIMATE FOR YOUR SLEEP.**

Zefiro is patent technology Tubes: a complex grid-like arrangement of tubular elements acting as aeration channels designed for fast dispersion of the moisture that builds up inside the mattress. The flexibility and resilience of the Tubes provide a perfect support for the body and help maintain a healthy and correct position. Different degrees of firmness for a pure ergonomic comfort



**CATAS**

Dorsal is a member of the Catas Test Laboratory (used for tests on slatted bed bases and mattresses).



**LGA**

All quality processes on material used to produce foam are monitored by LGA a German certification institute. Passing this quality tests is a proof of long duration of foam



**HOHENSTEIN INSTITUTE**

Specific tests heat dissipation and breathing capability have been performed on Tubes® at the Hohenstein institute in Germany. The same tests have been done on Naturargento fabric (cover with application of ions of silver through nano technology) and both have passed with good grades.



**E GUT TEST**

Zefiro also won the 2008 E Gut Test prize, a German consumers' association award for high quality products.

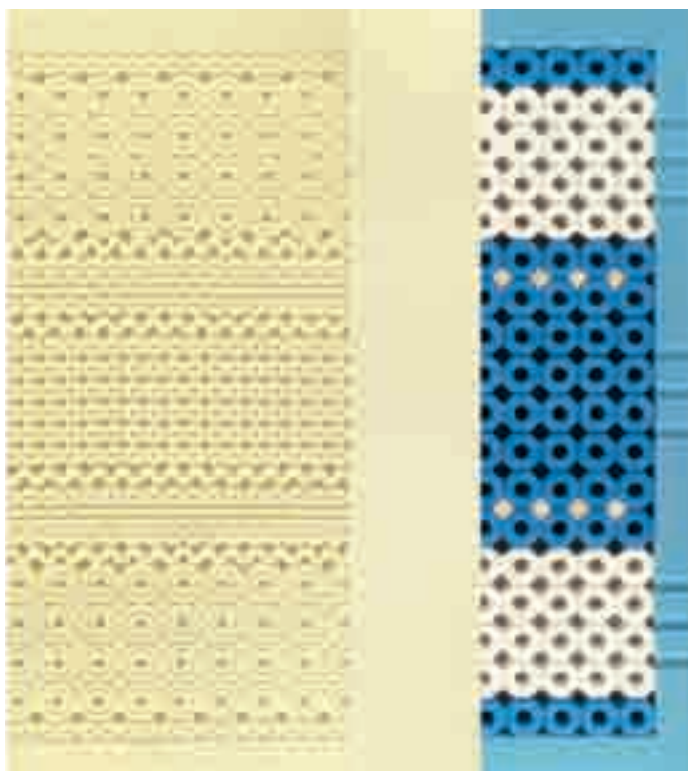


**INTERZUM AWARD: A PRESTIGIOUS AWARD TO ZEFIRO.**

The Zefiro Tubes® technology, won the Interzum Award at Interzum Cologne 2007. A prestigious award at the "Intelligent Material and Design 2007" category.



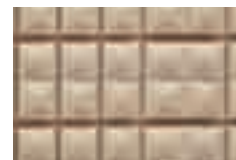
# Zefiro Platinum



## Zefiro Platinum



Upper layer  
Natur Memory

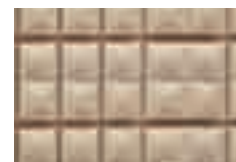


Bottom layer  
Trio Cell® Medium

## Zefiro Platinum Comfort



Upper layer  
Natur Memory Comfort



Bottom layer  
Trio Cell® Medium

Dorsal extends its Zefiro range with the new Platinum mattress that offers incomparable sensations of comfort and the guarantee of a perfect micro climate during sleep. **Climatic is a new insert which is placed in contact with Tubes® technology on both sides to increase air exchange inside the mattress.**

The top layer of Natur Memory is inlaid and ensures differentiated accommodation of the body areas by distributing weight to adapt perfectly to the body.

Platinum also has a Comfort version dedicated to less heavy people or those who prefer to be wrapped in sleep.  
Core height 21cm



### Climatic Insert

Layer of microporous grid made up of communicating cells that allow air through, providing good breathability and better dispersion of the humidity that forms inside the mattress.



The increased "breathing" capacity of this mattress due to the insertion of a microporous grid placed above and below the layer of Tubes®, makes sleep even more **comfortable, healthy and restful for the body**. Comfortable because increased air exchange ensures dispersion of the excess humidity produced by body perspiration and it's a well known fact that in the absence of humidity the body perceives excess heat or cold less. Healthy because when the skin rests on a dry ventilated surface its physiology improves reducing strain on the tissues compressed under the weight of the body in the static stage of sleep. Restful because the greater comfort perceived by the surface layers of the body reduces the need to change position continuously during the night and ensures better blood circulation during sleep.

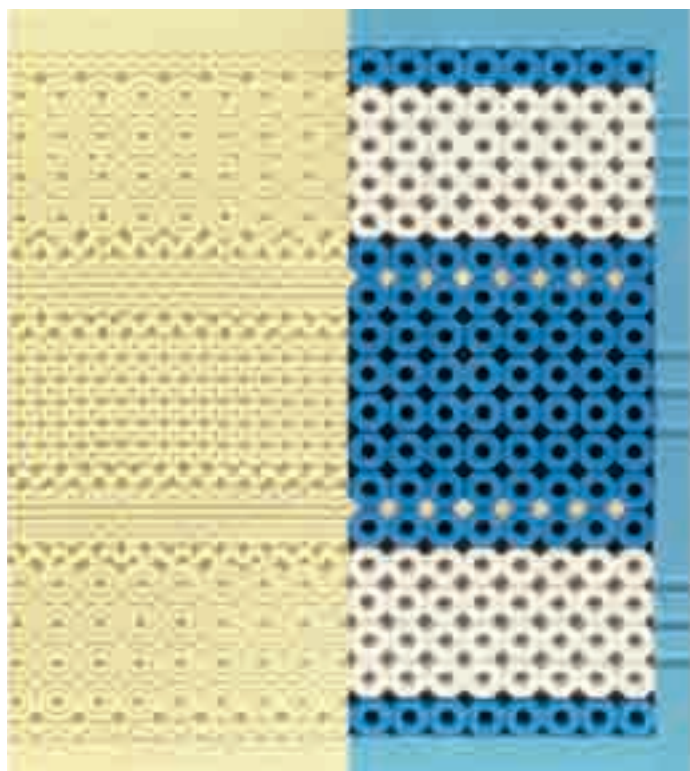
Zefiro Platinum e Platinum Comfort are available with 4 variants for covers:

	Mattress height cm	Platinum and Platinum Comfort						Custom size calculator cm <sup>2</sup>
		190 / 195 / 200 cm						
		80 85	90	100 120	140	160 165 170	180	
Naturargento Cotton	24	1300	1456	2015	2470	2600	2912	0,099
Thermic Klima	24	1410	1579	2186	2679	2820	3158	0,107
Thermic Air Flow	25	1380	1546	2139	2622	2760	3092	0,105
Naturargento Soft Care	25	1380	1546	2139	2622	2760	3092	0,105

DORSAL MATTRESSES ARE DELIVERED PACKED IN CARDBOARD BOXES.



# Zefiro 108 Memory

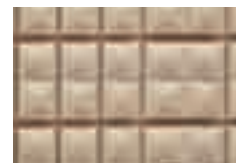


**DORSAL WELLBEING DEVICES:**  
ZEFIRO 108 MEMORY IS AVAILABLE  
AS A MEDICAL DEVICE. SEE  
PAGE 154.

## Zefiro 108 Memory



Upper layer  
Natur Memory



Bottom layer  
Trio Cell® Medium

## Zefiro 108 Memory Comfort



Upper layer  
Natur Memory Comfort



Bottom layer  
Trio Cell® Medium

Zefiro 108 Memory is a mattress ideal for meeting the highest standards of comfort.

**The top layer of carved Natur Memory** ensures differentiated accommodation of the body parts, distributing weight to adapt perfectly to the contours of the body

Anatomical studies for Tubes® technology and **the use of excellent materials such as Natur Memory and Grand Soleil Trio Cell®** make Zefiro 108 Memory an extremely prestigious model.

Zefiro 108 Memory is also available in the Comfort version, dedicated to the less heavy or those who prefer to be wrapped in sleep.  
Core height 18cm

Zefiro 108 Memory and 108 Memory Comfort come with 7 cover variants:

	Mattress height cm	108 Memory and 108 Memory Comfort						Custom size calculator cm <sup>2</sup>
		190 / 195 / 200 cm						
		80 85	90	100 120	140	160 165 170	180	
Naturargento Cotton	21	1170	1310	1814	2223	2340	2620	0,089
Nambo Summer/Winter	21	1170	1310	1814	2223	2340	2620	0,089
Thermic Klima	21	1280	1434	1984	2432	2560	2868	0,097
Thermic Air Flow	22	1250	1400	1938	2375	2500	2800	0,095
Naturargento Soft Care	22	1250	1400	1938	2375	2500	2800	0,095
Thermic Sensitive	19	1025	1148	1589	1948	2050	2296	0,078
Nambo Sensitive	19	1025	1148	1589	1948	2050	2296	0,078



The unique feature of this mattress is the ability of its structure to respond simultaneously to three important body needs.

**Excellent breathability.**  
Natur Memory top: ensures good accommodation of all the body curves, distributing the pressure loads to guarantee proper blood and lymphatic circulation.

**Support:** the Tubes® structure with differentiated zones and good resistance to compression by the Trio Cell® base guarantee excellent support for the deep structure of the body: the spine. Zefiro 108 Memory looks after the whole body, from the surface layers of the skin to the intermediate ones of the muscles, to the deep skeletal structure: the spine.

DORSAL MATTRESSES ARE DELIVERED PACKED IN CARDBOARD BOXES.



# Zefiro 108 Basic



**Comfort layer in Trio Cell®, available in firm, medium or soft versions with seven comfort zones.**

Tubes® Technology used with multi-zone system over the entire mattress.

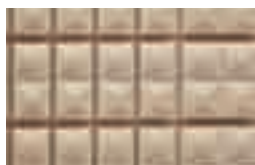
Core height 18cm

zefiro

Zefiro 108 Basic is available with three degrees of firmness:



Firm



Medium



Soft

Firmness: Firm, Medium, Soft

Zefiro 108 Basic is available with 9 cover variants:	Mattress height cm	190 / 195 / 200 cm						Custom size calculator cm <sup>2</sup>
		80 85	90	100 120	140	160 165 170	180	
Naturargento Cotton	21	1100	1232	1705	2090	2200	2464	0,084
Nambo Summer/Winter	21	1100	1232	1705	2090	2200	2464	0,084
Sleep Dry Soft Care	22	1100	1232	1705	2090	2200	2464	0,084
Thermic Klima	21	1210	1355	1876	2299	2420	2710	0,092
Thermic Air Flow	22	1180	1322	1829	2242	2360	2644	0,090
Naturargento Soft Care	22	1180	1322	1829	2242	2360	2644	0,090
Sleep Dry Cotton	21	1030	1154	1597	1957	2060	2308	0,078
Thermic Sensitive	19	955	1070	1480	1815	1910	2140	0,073
Nambo Sensitive	19	955	1070	1480	1815	1910	2140	0,073



The empty tube structure works in such a way that when the body moves normally as it does during sleep there is considerable recirculation of air inside the mattress which disperse accumulated heat and humidity and ensures better balance in controlling body temperature.

The Tubes® structure divided into seven zones enlarges the effect, as does the comfort layer of Trio Cell® that guarantees even greater breathability and better adaptation to the contours of the body.

DORSAL MATTRESSES ARE DELIVERED PACKED IN CARDBOARD BOXES





# Zefiro 84



**Comfort layer in Duo Cell®, available with high and medium firmness and seven comfort zones.**

Tubes® Technology is used with a multi-zone system in the areas which support more weight.

Core height 18cm

zefiro

Zefiro 84 is available with two degrees of firmness:



Medium



Firm

		Firmness: Firm and Medium						
		190 / 195 / 200 cm						
	Mattress height cm	80 85	90	100 120	140	160 165 170	180	Custom size calculator cm <sup>2</sup>
<b>Naturargento Cotton</b>	21	960	1075	1488	1824	1920	2150	0,073
<b>Namboo Summer/Winter</b>	21	960	1075	1488	1824	1920	2150	0,073
<b>Sleep Dry Soft Care</b>	22	960	1075	1488	1824	1920	2150	0,073
<b>Thermic Klima</b>	21	1070	1198	1659	2033	2140	2396	0,081
<b>Thermic Air Flow</b>	22	1040	1165	1612	1976	2080	2330	0,079
<b>Naturargento Soft Care</b>	22	1040	1165	1612	1976	2080	2330	0,079
<b>Sleep Dry Cotton</b>	21	890	997	1380	1691	1780	1994	0,077
<b>Thermic Sensitive</b>	19	815	913	1263	1549	1630	1826	0,062
<b>Namboo Sensitive</b>	19	815	913	1263	1549	1630	1826	0,062



Zefiro 84 has the ability to adapt to loads due to the comfort layer in Duo Cell® shaped to give more in the zones under greater pressure to conform to the shape of the body.

DORSAL MATTRESSES ARE DELIVERED PACKED IN CARDBOARD BOXES.



*Important factors for healthy rest,  
such as a perfect micro climate and ergonomic comfort,  
contribute to our physical, mental and spiritual wellbeing.*

*With this in mind Dorsal presents its absolutely innovative pillow: Zefiro.  
Just like a continuous breath Zefiro gives the pillow  
a sensation of freshness and comfort  
for a perfect hygienic micro climate.*

*Zefiro: the perfect climate for sleep.*

# Zefiro, the pillow that breathes with you.

**The Zefiro pillow is based on sunflower seed oil and water and employs Tubes® Technology. Due to a complex system of ventilation channels Zefiro does not accumulate humidity, which is dispersed from the pillow giving a wonderfully fresh sensation.**

Zefiro is a really revolutionary pillow. It is designed to use absolutely innovative materials and technologies. The results are exceptional: highly breathable and perfectly hygienic.

Zefiro is perfect for sleeping in any position: on your front, on your side or on your back. Washable: the external Soft Care cover can be washed by hand or in the washing machine at 40°. The inner Tubes® part is not washable.

## Soft Care

Highly breathable cover in elastic cotton, removable.

The special **Air Flow system** allows the fabric and Soft Care to be fixed without using quilting.

**The result is excellent distribution of pressure that ensures great comfort for the face and neck.**

## Zefiro High/Low

Unique comfort available in two heights.



72 x 38 x 8 h	72 x 38 x 12 h
119 €	138 €

MEASUREMENTS IN CENTIMETRES

## Zefiro Contour



72 x 38 x 9-11 h
147 €

MEASUREMENTS IN CENTIMETRES



Customized carrying case for Zefiro pillow.



**DORSAL WELLBEING DEVICES:**  
ZEFIRO CERVICALE IS A MEDICAL  
DEVICE. SEE PAGE 154





## Grand Soleil

- 54. Grand Soleil concepts
- 58. Grand Soleil Mattress range
- 72. UP
- 74. BabySol
- 76. Play



To make a mattress all you need is a flower.



# Grand Soleil: the first, the original, mattress made from renewable resources such as sunflower oil and water.

*To regenerate and finally sleep well a flower is all that is needed. Grand Soleil is a truly revolutionary material and the result is the mattress that you have always dreamt of, highly breathable, hygienic and with extreme comfort. Incomparable for the 10 reasons.*

1  
**Grand Soleil is the first mattress made from renewable natural sources.** Unlike standard foam, derived from petroleum (crude oil), Grand Soleil by Dorsal is made from vegetable oils.

2  
Only **Grand Soleil** has been approved by **C.A.R.M.E.N.** the important Coordinating Office for Renewable Resources.

3  
Thermo-recyclable product made with **eco-compatible** (CFC-free) processes.

4  
The only mattress with three different cell compositions: **Mono Cell®**, **Duo Cell®** **Trio Cell®**, for a personalised comfort.

5  
Every mattress is customised with **multi-zone contouring**, carried out in Dorsal factories with cutting-edge technology.

6  
**Grand Soleil** offers two other exclusive products made from sunflower oil and water: **Natur Memory**, the first visco-elastic material of its kind, and **Soft Care**, the revolutionary padding providing balanced support.

7  
All **Grand Soleil** mattresses undergo a crushing process twice to ensure **stabilization**. The result is an **ideal product** without **sagging or deformation to ensure superlative rest**.

8  
**Grand Soleil is odourless, antiallergenic**, anti-bacterial and breathable. Its top quality is proved **by years of sales on the European market**.

9  
It uses the expertise and know-how of **German** technologies and quality production processes.

10  
**In Italy all Grand Soleil products are recommended by the Italian Association of Physiotherapists.**





## Three cellular compositions to meet everybody's needs.

It's important to fully understand that the quality of materials is not an abstract concept, but a real decisive element that can truly affect the quality of life in its fundamental aspect of sleep. That's why it's essential to experience hands-on the difference between mattresses, to lie down and test their consistency: in other words to get to know the type of support, the degree of comfort and anatomical features most suitable for our body and needs.

Also in this respect **Grand Soleil is innovative because its structure has three different molecular compositions: Mono Cell®, Duo Cell® and Trio Cell®, that give each mattress exclusive performance to meet all needs.**

Let's take a look at the specific characteristics of each structure.



### Mono Cell®

The composing cells of this structure are all the same size. It supports the body and matches its movements perfectly, assuring a regenerative, comfortable sleep.



### Duo Cell®

With its mixed, carefully balanced structure (50% of small cells and 50% of a larger size) this composition offers a unique sleeping sensation. The supporting action of the larger cells, combined with the flexible support offered by the smaller cells, creates ideal support for the spine.



### Trio Cell®

Technology, innovation and comfort make this the top-of-the-range product, based on a combined structure incorporating three types of cells (33% large - 33% medium - 33% small). A perfect blend of support (large cells), balanced pressure (medium cells) and uncompromising comfort (small cells) in this material means the resulting product can soothe muscular tension and provide the body with total relaxation in every position.

## Anti bacteria and anallergic.

Looked closely, Grand Soleil has an open cell structure that gives it high breathability, guarantee of a perfect micro-climate. Its pores act like a natural sponge that allow the mattress to breathe eliminating all problems generated from moisture and humidity.



Oeko-Tex Standard 100 guarantees absence of harmful substances for the human organism. With eco-compatible production processes and without CFC gases and thermo-recyclable.



The creation of the innovative material has already been given the support of C.A.R.M.E.N., an important renewable resources coordination centre in Bavaria: this collaboration fully testifies to the environmental awareness of Grand Soleil.



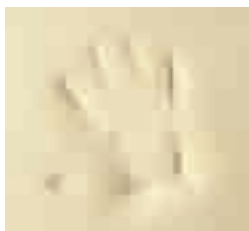
Natur Memory the original memory foam made from renewable resources.



## A perfect anatomic support.

Natur Memory is a heat sensitive foam (memory foam, visco elastic) that shapes up perfectly to your body. Ideal for pressure relieving as it models itself and adapts perfectly to the natural curves of the body, distributing the weight over the entire supporting surface. It relieves the pressure on the areas that bear the greater load, ensuring great comfort and relaxation, whatever position the body assumes.

Natur Memory can be found on: Zefiro Platinum, Zefiro108 Memory, Antares, Etoile, Vega, Matrix Memory and Sublime



## Technologically innovative.

**Unlike traditional visco elastic on the market, Natur Memory is remarkable for its composition based on sunflower oil and water. It is odourless and also "breathes": qualities obtained by a special working process that gives it an open cell structure. This features make Natur Memory a anallergic and antibacterial material.**

Natur Memory is available in two versions: standard and comfort for light weights or simply for those who love an embracing rest.



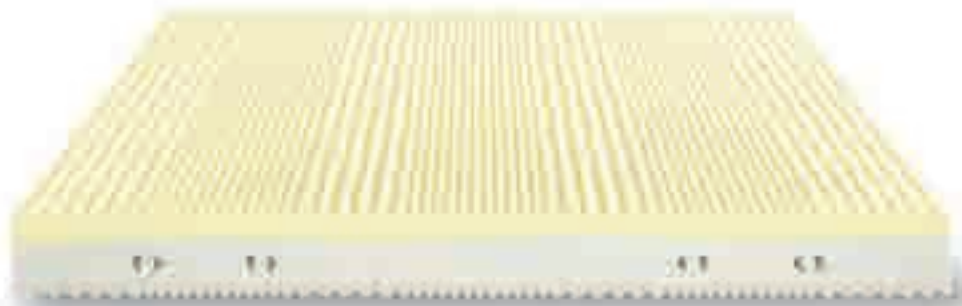
Natur  
Memory

Natur  
Memory  
Comfort





## Antares



### Antares is a protagonist of the quality of our sleep.

It is a core modelled with seven differentiated contour zones, matched with innovative Natur Memory for absolute comfort. Special processing allows it to adapt to the body and increases the breathability of the mattress.

**Antares is now made with a new process that differentiates the head and foot ends, one more comfortable and the other firmer to considerably increase adaptation.**

The top layer with 7cm of Natur Memory is matched with 11cm of medium or soft Grand Soleil Trio Cell®.

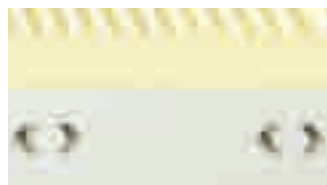


**DORSAL WELLBEING DEVICES:**  
ANTARES IS AVAILABLE AS A  
MEDICAL DEVICE. SEE PAGE 154.

Antares is available with two degrees of firmness, core height 18cm



Natur Memory + Trio Cell® Medium



Natur Memory + Trio Cell® Soft



**Firmness: Medium and Soft**

	Mattress height cm	190 / 195 / 200 cm						Custom size calculator cm <sup>2</sup>
		<b>80 85</b>	<b>90</b>	<b>100 120</b>	<b>140</b>	<b>160 165 170</b>	<b>180</b>	
<b>Antares</b> is available with 9 cover variants:								
<b>Naturargento Cotton</b>	21	845	946	1310	1606	1690	1892	0,064
<b>Nambo Summer/Winter</b>	21	845	946	1310	1606	1690	1892	0,064
<b>Sleep Dry Soft Care</b>	22	845	946	1310	1606	1690	1892	0,064
<b>Thermic Klima</b>	21	955	1070	1480	1815	1910	2140	0,073
<b>Thermic Air Flow</b>	22	925	1036	1434	1758	1850	2072	0,070
<b>Naturargento Soft Care</b>	22	925	1036	1434	1758	1850	2072	0,070
<b>Sleep Dry Cotton</b>	21	775	868	1201	1473	1550	1736	0,059
<b>Thermic Sensitive</b>	19	700	784	1085	1330	1400	1568	0,053
<b>Nambo Sensitive</b>	19	700	784	1085	1330	1400	1568	0,053

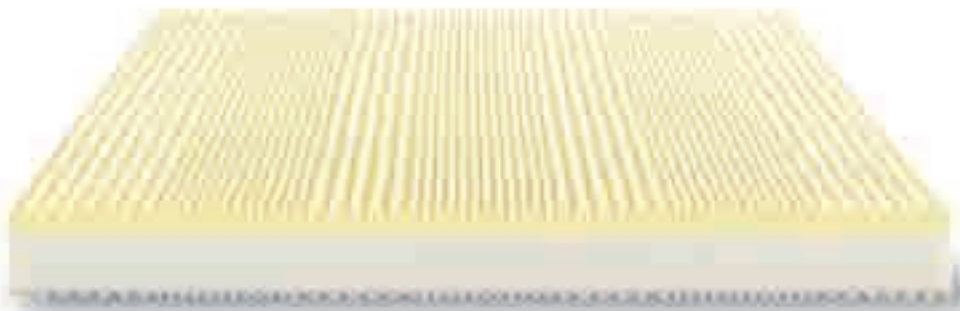


A successful product arises from matching the load-bearing structure in Gran Soleil Trio Cell® featuring crosswise holes that guarantee good breathability and air exchange inside the mattress with the Natur Memory top which has increased thickness in the shoulder and hip/calf zones. This produces a mattress that makes the heavier parts of the body feel well supported. Excellent for those who prefer to sleep on their sides and need to keep the spine well aligned.

DORSAL MATTRESSES ARE DELIVERED PACKED IN CARDBOARD BOXES.



## Etoile



**DORSAL WELLBEING DEVICES:**  
ETOILE IS AVAILABLE AS A MEDICAL  
DEVICE. SEE PAGE 154.

### Grand Soleil Mono Cell® and Natur Memory core.

Seven zone of comfort for a total relax also by adding Natur Memory which decreases pressure points and increases blood circulation giving rest a more relaxing and reinvigorating effect. Profiled inner core with seven zones of comfort with a layer of Natur Memory for an absolute comfort. Upper layer 5cm of heat sensitive Natur Memory visco elastic, lower layer 13cm of Grand Soleil Mono Cell® medium or soft.

Etoile is available  
in two grades  
of firmness.  
Total core  
height 18cm



Nartur Memory + Mono Cell® Medium



Nartur Memory + Mono Cell® Soft



Etoile  
is available  
with 9 cover  
variants:

Firmness: Medium and Soft

	Mattress height cm	190 / 195 / 200 cm					Custom size calculator cm <sup>2</sup>
		<b>80 85</b>	<b>90</b>	<b>100 120</b>	<b>140</b>	<b>160 165 170</b>	
<b>Naturargento Cotton</b>	21	730	818	1132	1387	1460	0,055
<b>Nambo Summer/Winter</b>	21	730	818	1132	1387	1460	0,055
<b>Sleep Dry Soft Care</b>	22	730	818	1132	1387	1460	0,055
<b>Thermic Klima</b>	21	840	941	1302	1596	1680	0,064
<b>Thermic Air Flow</b>	22	810	907	1256	1539	1620	0,062
<b>Naturargento Soft Care</b>	22	810	907	1256	1539	1620	0,062
<b>Sleep Dry Cotton</b>	21	660	739	1023	1254	1320	0,050
<b>Thermic Sensitive</b>	19	585	655	907	1112	1170	0,044
<b>Nambo Sensitive</b>	19	585	655	907	1112	1170	0,044

DORSAL MATTRESSES ARE DELIVERED PACKED IN CARDBOARD BOXES.



# Vega



**Vega unites the excellent characteristics of Trio Cell® material with the superb performance of Natur Memory Comfort.** The intrinsic power of Grand Soleil is emphasized by the complex design of the Vega core with seven different firmness zones.

By intersecting the different contour cuts the pressure on the various parts of the body is distributed over a broader surface. This prevents traumatic compression and the development of pathologies linked to poor rest. The diamond shaped reliefs provide deep natural massage.

**Inserted with a double layer into the core of the mattress, Natur Memory Comfort releases all its characteristics of anatomical adaptation. The result is ideal comfort.**

Internal layer in Natur Memory Comfort with differentiated firmness. Core height 21cm



Vega is available with three degrees of firmness:



Firm



Medium



Soft

Vega is available with 4 cover variants:

	Mattress height cm	Firmness: Firm, Medium and Soft						Custom size calculator cm <sup>2</sup>
		190 / 195 / 200 cm						
		80 85	90	100 120	140	160 165 170	180	
<b>Naturargento Cotton</b>	24	980	1098	1519	1862	1960	2196	0,074
<b>Thermic Klima</b>	24	1090	1221	1690	2071	2180	2442	0,083
<b>Thermic Air Flow</b>	25	1060	1187	1643	2014	2120	2374	0,081
<b>Naturargento Soft Care</b>	25	1060	1187	1643	2014	2120	2374	0,081



The central nucleus of Gran Soleil Trio Cell®, covered on top and underneath by a layer of Natur Memory Comfort, creates a structure that provides excellent support for the spine. During sleep the body changes positions to find better comfort accommodated by the layers which is Natur Memory.

DORSAL MATTRESSES ARE DELIVERED PACKED IN CARDBOARD BOXES.





# Soleil



## Grand Soleil Trio Cell® core.

The high intrinsic performance of Grand Soleil is enhanced by the complex design of the Soleil core surface, with seven zones comfort. The vertical and horizontal cutting grid, shaped as a diamond, distributes the pressure of the body recreating a relieving and natural massaging effect, Soleil is recommended for those who suffer from back pain or simply for those who are aware of the importance of sleeping well. Total core height 18cm

Soleil is available in three grades of firmness:



Firm



Medium



Soft

Soleil is available with 6 cover variants:

Firmness: Firm, Medium and Soft

	Mattress height cm	190 / 195 / 200 cm					Custom size calculator cm <sup>2</sup>
		80 85	90	100 120	140	160 165 170	
Naturargento Cotton	21	750	840	1163	1425	1500	0,057
Namboo Summer/Winter	21	750	840	1163	1425	1500	0,057
Sleep Dry Soft Care	22	750	840	1163	1425	1500	0,057
Naturargento Soft Care	22	830	930	1287	1577	1660	0,063
Sleep Dry Cotton	21	680	762	1054	1292	1360	0,052
Namboo Sensitive	19	605	678	938	1150	1210	0,046

DORSAL MATTRESSES ARE DELIVERED PACKED IN CARDBOARD BOXES.



## Elios



### Grand Soleil Duo Cell® core.

Seven zones of comfort and differentiated body support with a special "tear-drop" cutting to reduce pressure points and enhance ventilation. Total core height 18cm

Elios is available in three grades of firmness:



Firm



Medium



Soft

Elios is available with 6 cover variants:

	Mattress height cm	Firmness: Firm, Medium and Soft					Custom size calculator cm <sup>2</sup>
		190 / 195 / 200 cm					
		80 85	90	100 120	140	160 165 170	
Naturargento Cotton	21	675	756	1046	1283	1350	0,051
Nambo Summer/Winter	21	675	756	1046	1283	1350	0,051
Sleep Dry Soft Care	22	675	756	1046	1283	1350	0,051
Naturargento Soft Care	22	755	846	1170	1435	1510	0,057
Sleep Dry Cotton	21	605	678	938	1150	1210	0,046
Nambo Sensitive	19	530	594	822	1007	1060	0,040

DORSAL MATTRESSES ARE DELIVERED PACKED IN CARDBOARD BOXES.



## Sirio



### Grand Soleil Mono Cell® core.

Seven zones of comfort and a new cutting profile on the shoulder and lumbar area that have improved this entry-level model.  
Total core height 15cm

Sirio is available in two grades of firmness:

Sirio is available with 5 cover variants:	Mattress height cm	Firmness: Medium and Soft					Custom size calculator cm <sup>2</sup>
		190 / 195 / 200 cm					
		80 85	90	100 120	140	160 165 170	
<b>Green Cotton</b>	18	400	448	620	760	800	0,030
<b>Namboo Sensitive</b>	16	400	448	620	760	800	0,030
<b>Namboo Summer/Winter</b>	18	545	610	845	1036	1090	0,041
<b>Sleep Dry Soft Care</b>	19	545	610	845	1036	1090	0,041
<b>Sleep Dry Cotton</b>	18	475	532	736	903	950	0,036

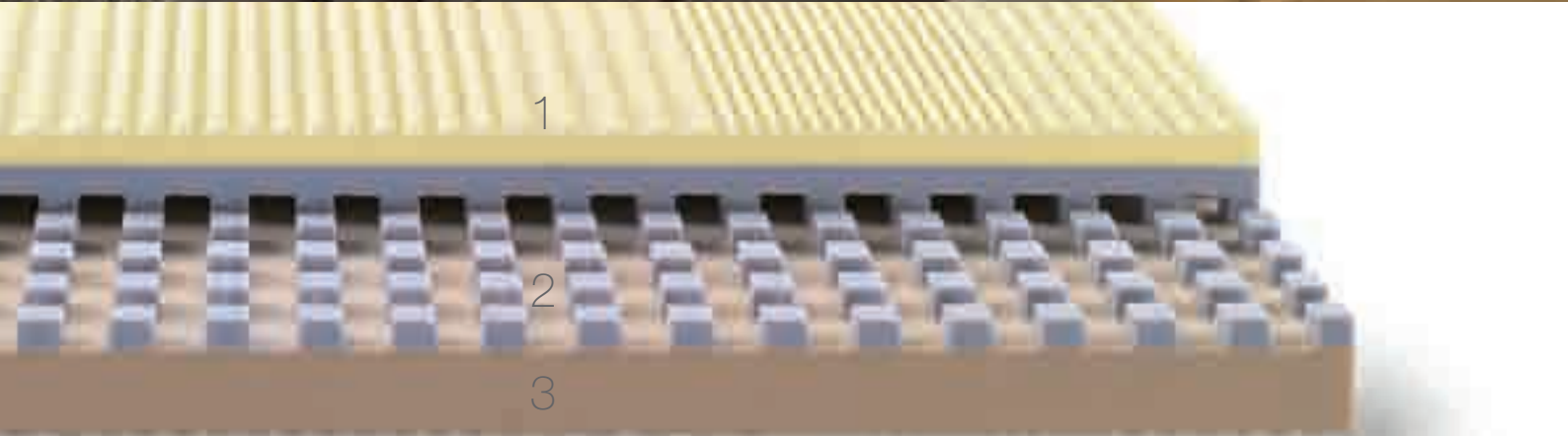


Medium



Soft

DORSAL MATTRESSES ARE DELIVERED PACKED IN CARDBOARD BOXES.



**1. Comfort layer**

Different comfort depending on Matrix models.

**2. Intelligent Cube® section**

The exclusive advantage of ventilation compared to traditional mattresses.

**3. Multi-zone system**

Core modelled with seven differentiated firmness zones on both sides.



## Matrix the intelligent Cube® system.

The Cube® system provides excellent ventilation for the mattress. The special internal "cubes", together with contour cuts, ensure suitable anatomical support.

Every movement made during sleep takes air into the mattress and lets out damp air.

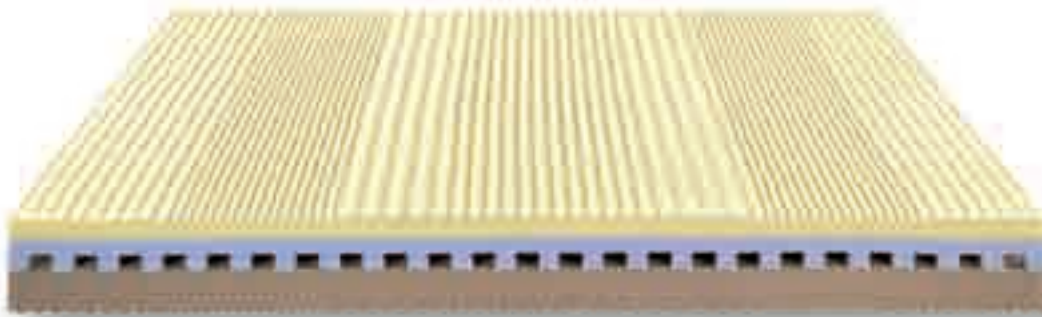
### Support inserts

Specially designed inserts are placed in the central area of Matrix to give the right support to the pelvis.





## Matrix Memory



**Top layer in self-modelling Natur Memory** enhanced by special contour cuts that aids adaptation to the body contours.

**The special air outlet channels of the Cube® system ensure optimum ventilation.**

Top layer with 4 cm of Natur Memory.

Core height 18cm

**Matrix Memory is available with 4 cover variants:**

	Mattress height cm	190 / 195 / 200 cm					Custom size calculator cm <sup>2</sup>
		80 85	90	100 120	140	160 165 170	
<b>Green Cotton</b>	21	475	532	736	903	950	0,036
<b>Namboo Sensitive</b>	19	475	532	736	903	950	0,036
<b>Namboo Summer/Winter</b>	21	620	694	961	1178	1240	0,047
<b>Sleep Dry Cotton</b>	21	550	616	853	1045	1100	0,042



The surface of the Matrix Memory version is in Natur Memory, which enhances the level of comfort and the ability to accommodate the body contours, distributing well the pressure loads. The wavy contour cuts define seven different firmness zones arranged so as to ensure more support where it is needed.

DORSAL MATTRESSES ARE DELIVERED PACKED IN CARDBOARD BOXES.



## Matrix Basic



Studies of shaping of seven firmness zones have provided the right distribution of body weight.

**The Cube® system guarantees excellent ventilation.**

Core height 16cm

Matrix Basic is available with 4 cover variants:

	Mattress height cm	190 / 195 / 200 cm					Custom size calculator cm <sup>2</sup>
		80 85	90	100 120	140	160 165 170	
Green Cotton	19	420	470	651	798	840	0,032
Namboo Sensitive	17	420	470	651	798	840	0,032
Namboo Summer/Winter	19	565	633	876	1074	1130	0,043
Sleep Dry Cotton	19	495	554	767	941	990	0,038



The special feature of Matrix is its internal structure. This is cut into cubes to create a grid in the mattress core that facilitates air circulation, an essential element to keep the temperature and degree of humidity comfortable for the body. In addition, the various layers of foam provide excellent support.

DORSAL MATTRESSES ARE DELIVERED PACKED IN CARDBOARD BOXES.

UP. Comfort above all.





# UP

## A comfortable pillow-top made to embrace you.

UP adapts to all types of mattresses to provide new sensations of wellbeing never felt before. It ensures uniform body pressure and perfect anatomical adaptation that gives beneficial total relaxation.

Available in the versions: **UP Natur Memory and UP Soft care.**



### A field of sunflowers.

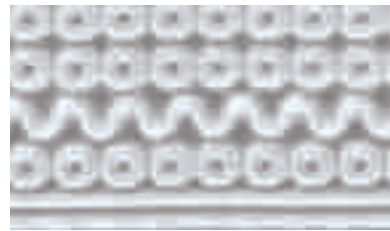
The cover fabric used for the UP pillow-top plays a fundamental role in extending **the feeling of comfort due to the extra flexibility** of the Elastan fibre used. A relief floral pattern distinguishes its attractive look.

### Sleep in a bed that is always clean and healthy.

UP protects the mattress from humidity, stains and dust. Removable covers with a practical zip on 3 sides of the single and 4 sides of the double model. **Non-allergenic, machine washable at 60°, it guarantees a bed in perfectly hygienic conditions for a truly healthy sleep.** Easy to lift, turn and freshen up.

## UP Natur Memory

Made of Natur Memory based on natural oils, UP uses the latest carving technology that gradually accommodates the natural contours of the body. Natur Memory adapts ergonomically to release muscular tension and provide a pleasant embrace.



## UP Soft Care

The Soft Care version of UP is soft as a cloud and will make any mattress into a place where you can relax. The open cell structure of Soft Care is highly breathable and dispersed humidity for a perfect micro climate. Washable for a fresh hygienic bed.



UP is available with sunflowers cover:

Mattress height cm	190 / 195 / 200 cm						Custom size calculator cm <sup>2</sup>	
	80 85	90	100 120	140	160 165 170	180		
UP Natur Memory	6	380	426	589	722	760	852	0,029
UP Soft Care	6	299	335	463	568	598	670	0,025

### UP also travels with you.

At last with UP you can take your comfort where you need it.

Available from 80 to 90cm versions.



DORSAL MATTRESSES ARE DELIVERED PACKED IN CARDBOARD BOXES

BabySol.  
Dedicated to the little ones.

*Children are the most important treasure in the world.  
Allowing them to grow in a healthy safe  
environment is an imperative task for all parents.*

*All families ask themselves  
how they can guarantee their children  
the best sleep as they grow up.*



*The answer comes from a survey carried out by Dorsal in  
co-operation with physiotherapists.  
The result is a line of products specially designed and  
created to meet the particular needs of youngsters. The  
growing period is a delicate time and to ensure that children  
develop good posture, not just at school but also when they  
sleep, means taking their future to heart and being aware  
that safeguarding their health is above all a question of a  
good night's sleep.*

**BabySol** The mattress for the child that leaves the cot and goes into his/her first bed.



**A field of sunflowers**

The fabric for the Babysol cover increases **the sensation of comfort given by the extra flexibility of Elastan fibre.**  
A relief floral pattern distinguishes its attractive look.

**Removable covers**

The BabySol cover is removable by means of a practical zip round all four sides. **Machine washable at 60° for absolute hygiene.**



The BabySol core is in **Grand Soleil, based on natural oils and shaped with comfort zones of differentiated firmness to accommodate the body perfectly.**  
Its open cell structure ensures suitable support and maximum breathability.  
Non-allergenic, non deformable, lightweight.

Mattress height cm	125 x 60cm
	180 €

**Energia Baby**

**The new pillow**

The Soft Care version of the Energy Baby pillow with sunflower seed oil and water. Soft Care provides uniform distribution of pressure, making this pillow especially comfortable.

- Odour free, fresh and non allergenic
- Complete with 100% cotton internal cover.
- Washable: pillow washable by hand or in the delicate cycle of the washing machine at 30°. Dry in the shade away from heat sources.



55 x 30 x 5 cm
<b>E-BABY</b> (Small size pillow cover)
22 €

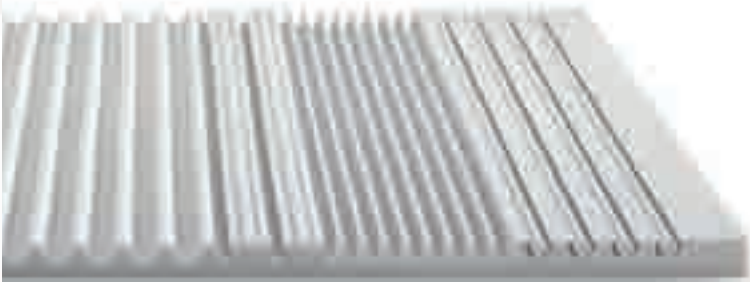
Play. The mattress that grows with you

*Dorsal cares about your children growing up and makes sure they sleep well in their bed and with the right posture.*



## Play Small

children up to 110-130cm in height



## Play Medium

children up to 130-150cm in height



## Play Big

children up to 150-170cm in height



## Play

As your children grow their needs change.

To take care of their health also means making sure they rest as well as possible. Play is a revolutionary mattress dedicated to the very young. It is made up of two different elements: a base which has a support function and a series of three different contour tops suitable for the changing shape of the body during growth.

As your children change over time, their mattress will need to grow with them so that the spine does not risk deformations.

**With the Play line it is now possible to buy a mattress suitable for the height and weight of your child, with the possibility over the years to replace just the top in order to adapt to new needs of your children as they grow.**

Interchangeable tops, in Natur Memory Comfort, with contour cuts to create comfort zones of differentiated firmness that accommodate the shapes of your child's body, giving way where necessary and providing greater support to the heavier segments so that the spine rests in a neutral position.



## Play and Physiotherapists

**Play is the first mattress designed for growing children from 4 to 14 years old and has been studied by Dorsal in co-operation with the Italian Association of Physiotherapists.**

**The cover on Play is removable by means of the practical zip on all four sides. Machine washable at 60° for absolute hygiene.**

The Melange fabric, dedicated to the kids' mattresses range, features colours that give a modern look and guarantees maximum hygiene and full protection from allergies.

This is because **Melange undergoes anti-microbial treatment that acts directly on the fabric fibre, inhibiting the growth of bacteria due to perspiration and preventing the formation of mould that causes bad odour.**

Play is available  
with Melange  
cover:

	Mattress height cm	190 / 195 / 200 cm			Custom size calculator cm <sup>2</sup>
		80 85	90	120	
Complete mattress	19	490	549	760	0,038
Interchangeable top	4	130	146	202	0,010



The possibility to choose the most appropriate top according to your child's height allows you to provide optimum support and maximum comfort that respects the physiology of the spine throughout your child's years of growth.

DORSAL MATTRESSES ARE DELIVERED PACKED IN CARDBOARD BOXES.



# Vitalay

- 80. Vitalay
- 82. Mattress range





Vitalay, rest and beauty. Take care of yourself while sleeping.

**Natural, healthy sleep promotes well-being, joie de vivre and beauty.**

The kind of beauty that comes from good health based on a wholesome diet, regular physical exercise and comfortable, beneficial rest, easing muscle tension and stress that builds up during the day.

**This is the ideal kind of comfort provided by a VITALAY mattress.**

Forget all you have heard and been told about latex. **VITALAY** is more than just standard latex. It is different because represents the excellence of its kind. Its secret lies in the combination of natural products and the **exclusive, complex manufacturing process called Talalay.**

The result is a special round cell structure which is very open and uniform, ensuring the mattress's unique resilience and total breathability. By choosing VITALAY you are guaranteed long-lasting and complete comfort without compromise, which will transform your sleep experience, for years on end, into one of extraordinary beauty.

Vitalay, the keys to the success:

- An extraordinary experience of comfort in the whole body
- A perfect elasticity that allows the spine to rest in a perfect straight position.
- Open cell structure regulates body temperature while sleeping
- Long lasting without sagging.
- Non-allergenic and humidity proof.
- Highly hygienic.



Vitalay Embrace

**An extraordinary sensation of breathability in an embrace.**

Dorsal presents the revolutionary viscoelastic material with a natural latex base using **Talay** technology. VITALAY **EMBRACE** is so accommodating that it completely adjusts to your body shape while retaining its unique breathability, freshness and durability.



Responds to pressure and heat, gently accommodating the body.



Let yourself go in a comfortable embrace.



Adjusts to your body shape in any position and always returns to its original shape.



VITALAY



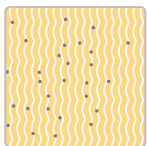
STANDARD LATEX



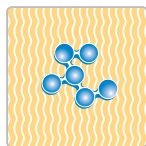




Vitalay: a product of excellence that starts from a unique production process.



**1. Exclusive lattices mix**



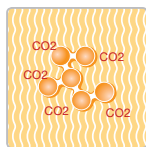
**4. Freezing**  
Molecules are brought down to  $-30^{\circ}\text{C}$ , which binds them together, to become an open cell structure.



**7. Washing**  
This process eliminates the residues of proteins, making the cores clean.



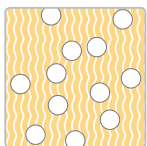
**2. Injection.** Exclusive aluminium moulds



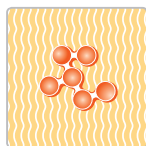
**5. Gelling**  
The compound is treated with a mix of  $\text{CO}_2$ .



**8. Drying and post vulcanisation**  
8 hours at  $85^{\circ}\text{C}$ .



**3. Vacuum**  
Air is extracted from the mould causing the mix to expand and the appearing of cells.



**6. Vulcanisation**  
The mould is taken to  $+115^{\circ}\text{C}$  which makes the cells expand.



**9. Test**  
Quality checks are run in 15 different parts to verify density, elasticity and product defects.



**An allergy barrier**

VITALAY has antibacterial qualities and is barren ground for mould and dust mites. In addition, at the end of the work cycle, careful washing eliminates any residue from each core, especially allergenic latex proteins. These characteristics are tested and checked by laboratory tests performed by the ERLANGEN DERMATOLOGISCHE UNIVERSITÄTSKLINIK, Germany.



**Natural and environmentally friendly**

The VITALAY exclusive latex mix does not contain chalk, talcum, or any other harmful components. To protect the environment, no CFC is used in the production cycle, earning us an OEKO-Tek Standard 100 certificate.



## Sublime



**Sublime unites the extraordinary qualities of Vitalay latex with the performance of Natur Memory Comfort. The innovative anatomical design of the insert reacts to body movements, supporting and holding it: the result is extraordinary comfort.**

Its combination of natural materials, the degree of firmness and the structure with differentiated zones make Sublime an excellent mattress. Firmness: medium/firm. Core height 18cm



Universitätsklinikum  
Erlangen



VITALAY has antibacterial qualities and is barren ground for mould and dust mites. In addition, at the end of the work cycle, careful washing eliminates any residue from each core, especially allergenic latex proteins. These characteristics are tested and checked by laboratory tests performed by the ERLANGEN DERMATOLOGISCHE UNIVERSITÄTSKLINIK, Germany.



vitalay

Sublime  
is available  
with 4 cover  
variants:

	Mattress height cm	190 / 195 / 200 cm				Custom size calculator cm <sup>2</sup>
		80 85	90	100 120	140 160 165 170	
<b>Naturargento Cotton</b>	21	1135	1317	1759	2270	0,086
<b>Thermic Klima</b>	21	1245	1444	1930	2490	0,095
<b>Thermic Air Flow</b>	22	1215	1409	1883	2430	0,092
<b>Naturargento Soft Care</b>	22	1215	1409	1883	2430	0,092



The support of a Vitalay latex core softened by two layers of Natur Memory Gran Soleil ensure physiological rest by sustaining the spine in a comfortable natural position, enveloping it and following its contours. The aid of the contoured surface gives the top seven different degrees of firmness. The natural breathable materials help to maintain an ideal micro-climate for sleeping without accumulating heat or humidity.

DORSAL MATTRESSES ARE DELIVERED PACKED IN CARDBOARD BOXES.



## Paradise



**DORSAL WELLBEING DEVICES:**  
PARADISE IS AVAILABLE AS A  
MEDICAL DEVICE. SEE PAGE 154.

### **Amplifying your senses for unique comfort.**

A differentiated seven-zone Vitalay inner core, combined with Embrace memory foam for a unique comfort and breathability. Embrace accommodates your body, releasing tension and stiffness. Its special internal construction highlights the anatomical features of the mattress. Paradise is the "beauty farm" for the night.


Top layer 5cm memory Embrace over a 13cm Vitalay firm layer. Seven-zone comfort design. Total breathability with open cells. Hypoallergenic, certified by laboratory tests  
firmness: Embrace + Vitalay firm. Core height 18cm





Paradise is available with 8 cover variants:

	Mattress height cm	190 / 195 / 200 cm				Custom size calculator cm <sup>2</sup>
		80 85	90	100 120	140 160 165 170	
<b>Naturargento Cotton</b>	21	1200	1392	1860	2400	0,091
<b>Namboo Summer/Winter</b>	21	1200	1392	1860	2400	0,091
<b>Thermic Klima</b>	21	1310	1520	2031	2620	0,100
<b>Thermic Air Flow</b>	22	1280	1485	1984	2560	0,097
<b>Naturargento Soft Care</b>	22	1280	1485	1984	2560	0,097
<b>Sleep Dry Cotton</b>	21	1130	1311	1752	2260	0,086
<b>Thermic Sensitive</b>	19	1055	1224	1635	2110	0,080
<b>Namboo Sensitive</b>	19	1055	1224	1635	2110	0,080

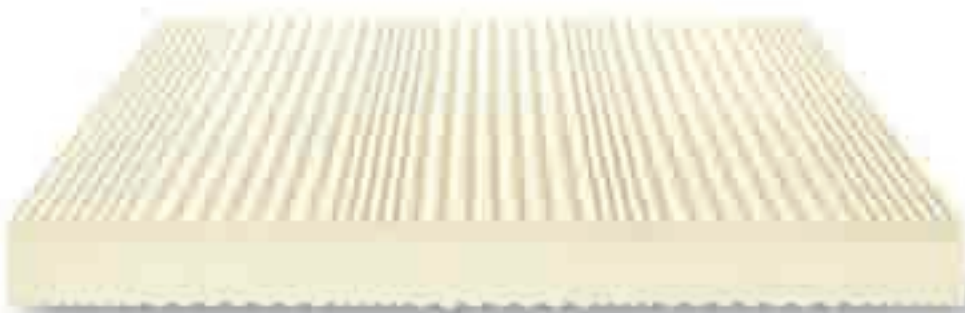
  
 Universitätsklinikum  
 Erlangen

VITALAY has antibacterial qualities and is barren ground for mould and dust mites. In addition, at the end of the work cycle, careful washing eliminates any residue from each core, especially allergenic latex proteins. These characteristics are tested and checked by laboratory tests performed by the ERLANGEN DERMATOLOGISCHE UNIVERSITÄTSKLINIK, Germany.

DORSAL MATTRESSES ARE DELIVERED PACKED IN CARDBOARD BOXES.



## Divine



**DORSAL WELLBEING DEVICES:**  
 DIVINE IS AVAILABLE AS A MEDICAL  
 DEVICE. SEE PAGE 154.

### **Divine comfort and breathability.**


The special differentiated seven-zone construction with memory Embrace helps the body unwind and muscles to relax, improving the quality of your sleep. Top layer is 4cm memory Embrace over a 12cm Vitalay firm layer. Firmness: Embrace + Vitalay medium. Core height 15cm.





**Divine  
is available  
with 6 cover  
variants:**

	Mattress height cm	190 / 195 / 200 cm				Custom size calculator cm <sup>2</sup>
		80 85	90	100 120	140 160 165 170	
<b>Naturargento Cotton</b>	18	1030	1195	1597	2060	0,078
<b>Namboo Summer/Winter</b>	18	1030	1195	1597	2060	0,078
<b>Sleep Dry Soft Care</b>	19	1030	1195	1597	2060	0,078
<b>Sleep Dry Cotton</b>	18	960	1114	1488	1920	0,073
<b>Namboo Sensitive</b>	16	885	1027	1372	1770	0,067
<b>Green Cotton</b>	18	885	1027	1372	1770	0,067

  
 Universitätsklinikum  
 Erlangen

VITALAY has antibacterial qualities and is barren ground for mould and dust mites. In addition, at the end of the work cycle, careful washing eliminates any residue from each core, especially allergenic latex proteins. These characteristics are tested and checked by laboratory tests performed by the ERLANGEN DERMATOLOGISCHE UNIVERSITÄTSKLINIK, Germany.





# Body Care



## BodyCare, a perfect balance of quality.

BodyCare is a Dorsal project in collaboration with the experts of the Talalay latex process. The grade of firmness and the profiled surface give the inner core a perfect balance which results in a unique comfort and perfect adjustability to motorised slats systems contouring and adjusting naturally to your body shapes.  
Firmness: medium/firm. Core height 15cm



vitalay

Body Care is available with 6 cover variants:

	Mattress height cm	190 / 195 / 200 cm				Custom size calculator cm <sup>2</sup>
		80 85	90	100 120	140 160 165 170	
Naturargento cotton	18	960	1114	1488	1920	0,073
Nambo Summer/Winter	18	960	1114	1488	1920	0,073
Sleep Dry Soft Care	19	960	1114	1488	1920	0,073
Sleep Dry Cotton	18	890	1032	1380	1780	0,068
Nambo Sensitive	16	815	945	1263	1630	0,062
Green Cotton	18	815	945	1263	1630	0,062



VITALAY has antibacterial qualities and is barren ground for mould and dust mites. In addition, at the end of the work cycle, careful washing eliminates any residue from each core, especially allergenic latex proteins. These characteristics are tested and checked by laboratory tests performed by the ERLANGEN DERMATOLOGISCHE UNIVERSITÄTSKLINIK, Germany.

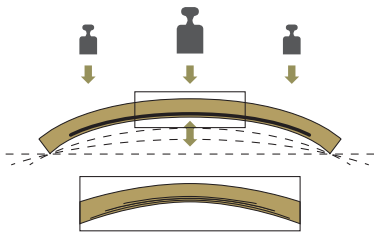
DORSAL MATTRESSES ARE DELIVERED PACKED IN CARDBOARD BOXES.

Anatomic wood frame slatted bases





- 92. Anatomic wood frame slatted bases
- 94. XPoint
- 98. XPoint Range
- 104. les Base
- 106. Advance
- 108. Energy
- 110. Sintesi
- 112. Sana
- 115. Idea Headboard
- 116. Forma
- 118. Viva
- 138. Accessories



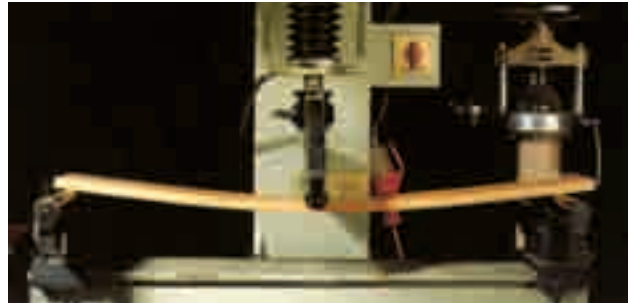
## Dynaflex® slats exclusive Dorsal® technology

The slats are the heart of the bed base.

That is why Dorsal has chosen Dynaflex®, a slat that is the result of innovative research with a high technological content that features special patented inserts that make it unique for quality, performance and durability.

Only Dorsal uses Dynaflex®, to ensure practically unique comfort in the back area, which responds in a uniform way to stress along the entire slat and adapts to all positions of relaxation. Quality and wellbeing are perfectly combined with performance and durability that are difficult to beat.

Tests and controls by the most authoritative German laboratories, such as W. KlauDitz Institut Fraunhofer and the Tuv.Sudwest, have certified that the innovative Dynaflex® slats confer a clearly superior anatomical adaptation to the bed base, thanks to the special patented inserts in the traction strip inside each individual slat. Laboratory tests show that elasticity is improved over the entire slat. The flexibility of Dynaflex is even, from the centre of the ends of the slat.



### The quality of Dorsal slats also depends on the selection of the beech wood coming from controlled cultivations.

The multiply is bent hot using non-pollutant, chlorine-free resins. Meticulous checks are made to ensure the right degree of humidity, stability, strength and flexibility. Each Dorsal product comes with certificate of authenticity and warranty to test the finished quality.



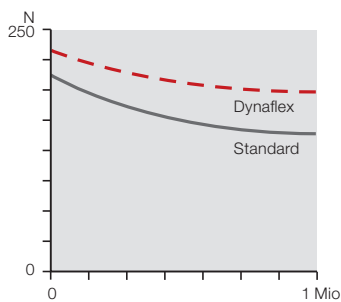
#### TUV Sudwest

German certification agency and quality inspection of production process of beech slats used on Dorsal frames: WERZALIT.

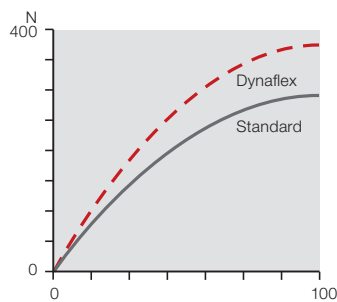


#### W: KlauDitz Institut Fraunhofer

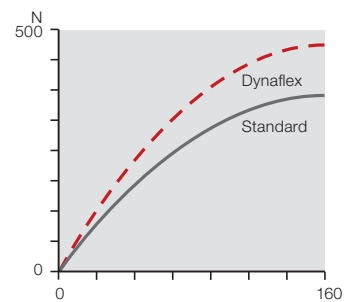
German institute where tests of resistance to weight, humidity and breaking are run on the exclusive patented Dynaflex® beech slats.



With Dynaflex® there is 40% more load resistance. Dynaflex® also has an "elastic memory", which means a longer life for the slat.



Resistance to humidity is increased by 35% in Dynaflex® compared to traditional slats.



The breaking load of Dynaflex® is 25% higher than of a traditional slat. The back area can therefore withstand even heavy loads.

# Dorsal® anatomic slatted bases Medical Devices

All solutions adopted by Dorsal® in designing and constructing Medical Devices adhere to stringent safety principles\* and take into account the most recent and generally recognised technological advancements.

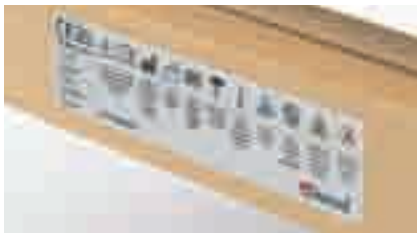
For this purpose, Dorsal® has further improved its Medical Device ergonomic support structures, which are accompanied by a detailed manual for their correct use and maintenance, aimed at ensuring optimal safety conditions for the user and any other operator.

Lateral stoppers keep the mattress in place



Legs are equipped with a safe and simple self-locking mechanism.

Labels prescribed under Directive 2007/47/CE



Warning labels

Efficient system for slowing down the head and feet sections

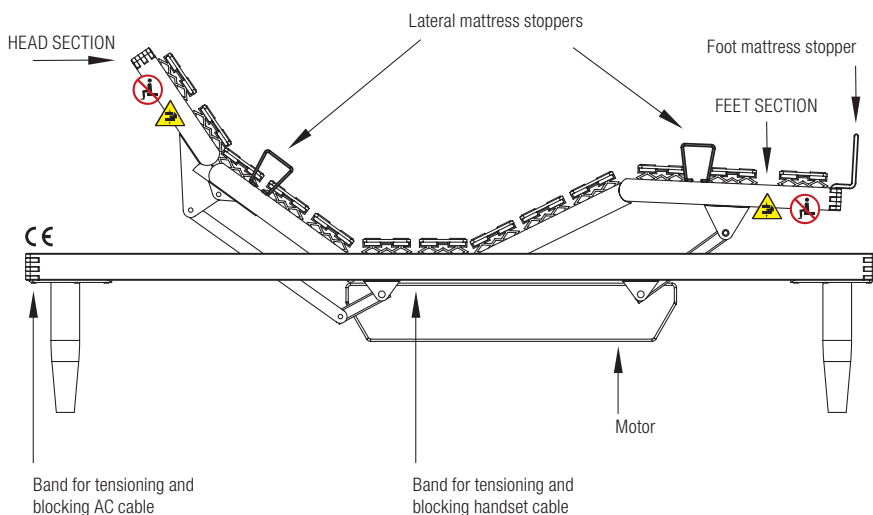


Practical bands free the underside of the base from electric cables

## Dorsal® motorised ergonomic support structures are CE marked

**Dorsal® motorised ergonomic support structures are not only compliant with EC Directive 93/42CE on Medical Devices and following Directive 2007/47/CE, but also respect the provisions of Directive 2006/42/CE on machinery, and of Directive 2004/108/CE on electromagnetic compatibility.**

The products' CE mark is indicated by a specific product label and by the manufacturer's Declaration of Conformity, featured at the foot of the instructions manual.



**Fall hazard:**  
do not sit on head or feet areas when not in a horizontal position



**Entrapment hazard**



**Directive**  
93/42/CEE  
2006/42/CE

Mod. GA versions with manual mechanisms include an efficient system for slowing down the head and feet sections.

\* Essential requisite prescribed by European Directive 2007/47/CE concerning Medical Devices, and by Standard UNI CEI EN ISO 14971, which sets out hazard management measures for Medical Device products.

# XPOINT

*The anatomical support that meets the needs  
of a sophisticated machine: the human body.*







Is an active anatomical support with combined technology capable of reducing the pressure points of the body.

### MultyPoint

**[1]** The MultyPoint technology is based on a combined system of multiple independent elements and three-dimensional springs that respond separately to the different pressures of the body. Each MultyPoint element has the job of supporting the weight of the body when resting. It follows the movements, reducing the pressure points to a minimum and maintaining the natural curve of the vertebral column.

### Dynaflex® slats

**[2]** The XPoint suspensions use exclusively Dynaflex® slats, characterised by special patented inserts with unrivalled quality, performance and duration. Each slat is covered by a white film that protects it from wear and reduces any stagnation of humidity between the support and mattress.

### Controlled cultivations

**[3]** The multi-layered beech wood does not contain polluting resins nor chlorine. Accurate controls are conducted to guarantee the right degree of humidity, stability, resistance and flexibility.

**[4]** The XPoint cursors have two adjustment levels: sideways movement of the cursor and an additional (+/-) adjustment, which allows personalising the firmness (harder or softer) of the back-lumbar zone.

**[5]** Even the lordosis zone can be adjusted at three different heights to adapt perfectly to your body.

### 7-zone technology

**[6]** The suspensions that support the 3D MultyPoints and Dynaflex® slats have different levels of firmness in relation to zones with greater or lesser loads, making XPoint a seven-zone system. The three dimensional springs are made of Hytrell®, a material with an elastic memory, that guarantees greater flexibility and longer duration.

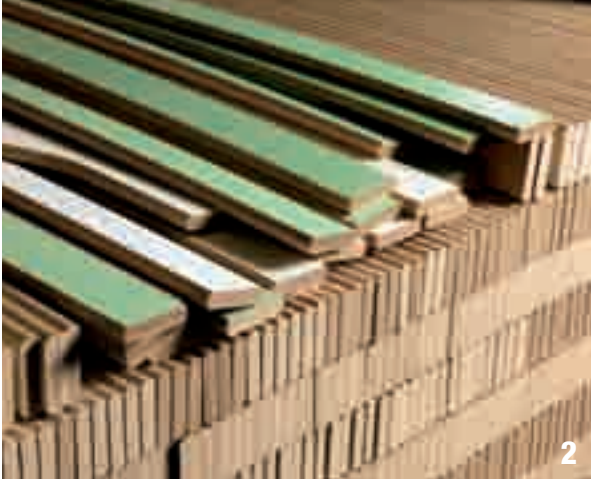
### Attention to detail.

**[7]** The new XPoint corners - an evolution of the "finger joint" - is made completely of beech wood. The new design gives aesthetic purity, high quality finishing nevertheless using solid materials. The new XPoint corner has been patented by Dorsal®.





1



2



4



5



6

7

## XPoint R4, maximum comfort.

XPoint 400, XPoint 300 and XPoint 200 slatted frames are available in the standard RA adjustable single bed with two motors, NA single bed and FA queen and king bed. This traditional range has the addition of the innovative R4 adjustable single bed with four motors.

XPoint R4 provides greater adjustment of the headrest and footrest by using separate actuators that allow to achieve any wanted position: reading a book, watching TV, working with your laptop, enjoying breakfast, relaxing your legs – without the need for piles of pillows.



### Positions that can be memorised

XPoint R4 can store up to four personalised positions.

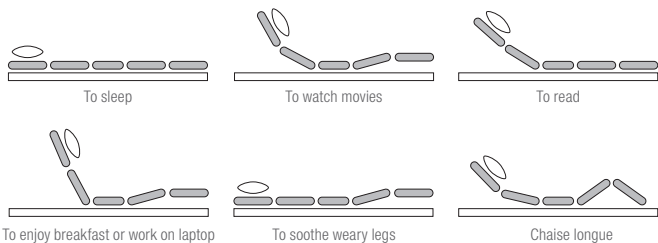
### Courtesy lights

XPoint R4 is equipped with two courtesy lights: one is a flashlight located in the remote control, the other is integrated in the motor for discretely lighting the floor to guide you out of the bed.

### R4 Technology

XPoint uses a radiofrequency (RF) remote control that can function at a range of up to 15-20 metres. It comes with an Energy Stop device that prevents the presence of electromagnetic fields inside the bed (stopping the power to the socket). In case of a blackout, it uses two 9v batteries that allow the headrest and footrest to lower back to sleeping position. In stand-by mode, it consumes less than 0,1 W, which is absolutely in line with the most recent requirements on energy waste (Community Directive 2005/32/CE, European Regulation 1275/2008 and following integrations introduced by the Community Directive 2009/125/CE).

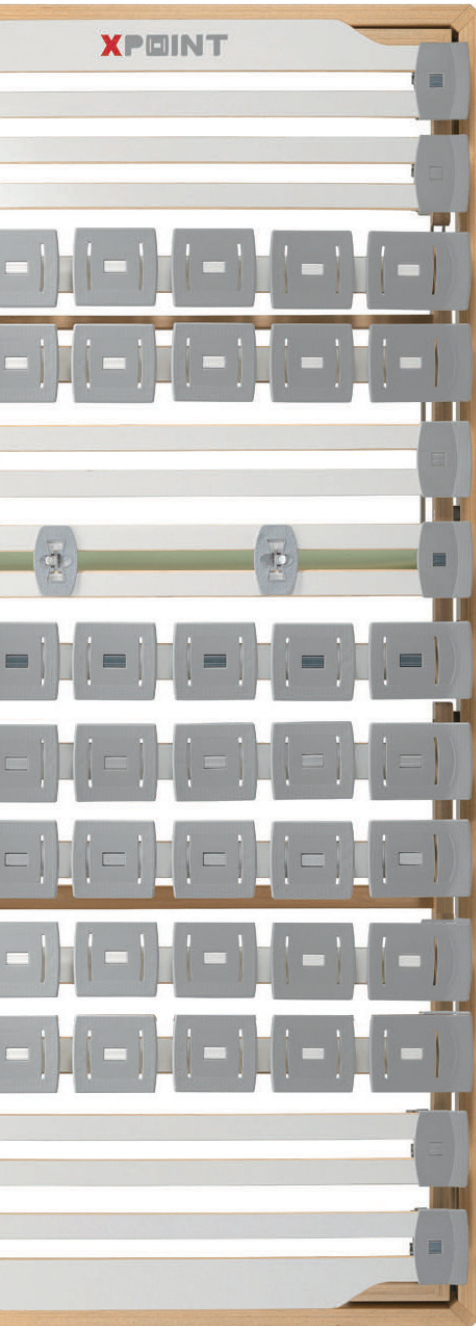
Some possible personalised positions of XPoint:



### XPoint designed for wellbeing

The innovative combined XPoint system is used to create top quality bed systems. The three models XPoint 400, XPoint 300 and XPoint 200 guarantee the ideal solution to problems of excess pressure and provide overall improvement in anatomical adaptation.

# XPoint 400



- 1 Dynaflex® slats with moderate suspensions for the head.
- 2 MultyPoint system for soft and comfortable support of the shoulder area.
- 3 Dynaflex® with cursors to adjust between two levels of firmness and three different heights to personalise lumbar support
- 4 MultyPoint system with reinforced suspensions for the hips.
- 5 MultyPoint system with moderate suspensions for the legs.
- 6 MultyPoint system with soft comfortable suspensions for the calves.
- 7 Dynaflex® slats with moderate support for accommodating the feet.

XPoint 400 consists of MultyPoint three-dimensional elements which are distributed to support the physiological characteristics of the vertebral spine. The MultyPoint three-dimensional elements have different firmness grades to accommodate shoulders, pelvis, legs and calves areas.

The Dynaflex® slats are reserved to the areas of the head and feet.

This combined technology, working in perfect synergy with the mattress, allows muscles to relax completely, reducing night-time postural changes, and ensuring a comfortable rest and sleep.

The device for adjusting the height (three different levels are available) and firmness of the lordosis zone allows personalising XPoint 400 for a perfect anatomical adaptation.

- Multiply beech wood frame 60x30mm



The innovative independent element support system with three-way springs, combined with the more traditional slats, ensures adaptation and the right support for the whole spine, not only during the static stage of sleep but also during the dynamic stage of posture adjustments. The possibility of regulating the resistance response makes XPoint an elastic tool that can adapt to the evolution and development of our spinal column, which has different needs over time and at given points in our lives (for example, in the case of pregnancy, recovery from an operation or in the event of back problems).



**DORSAL WELLBEING DEVICES: XPOINT 400 IS**  
AVAILABLE AS A MEDICAL DEVICE. SEE PAGE 154.

## Standard feet



- P70**
- Set of 60x60mm feet.
  - Natural beech.
  - Pack of 4 feet.

Finished height	
<b>H 30</b>	<b>H 45</b>
<b>H 35</b>	<b>H 50</b>
<b>H 40</b>	
55 €	65 €

## Optional feet



- P60**
- Set of Ø 65mm feet.
  - Natural varnish.
  - Pack of 4 feet.

Finished height	
<b>H 30</b>	<b>H 45</b>
<b>H 35</b>	<b>H 50</b>
<b>H 40</b>	
33 €	40 €



- Connections**
- Central feet to connect single bases.
  - Pack of 2 feet.

Finished height	
<b>H 30</b>	<b>H 45</b>
<b>H 35</b>	<b>H 50</b>
<b>H 40</b>	
34 €	37 €

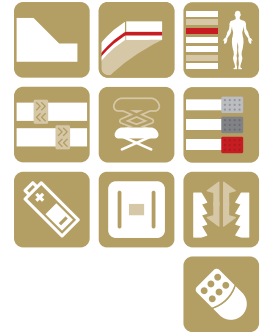


## XPoint 400 R4

- Single version adjustable with 4 motors and memory functions.
- Complies with the Machine 2006/42/CE Directive, appropriately labelled and comes with a user manual.
- Complies with Directive 2004/108/CE on electromagnetic compatibility.

190 / 195 / 200 cm		
80		120
85		
90		
2060 €		2999 €

FEET EXCLUDED



## XPoint 400 RA

- Single version adjustable with two motors.
- Complies with the Machine 2006/42/CE Directive, appropriately labelled and comes with a user manual.
- Complies with Directive 2004/108/CE on electromagnetic compatibility.

190 / 195 / 200 cm		
80		120
85		
90		
1279 €		1865 €

FEET EXCLUDED



## XPoint 400 NA

- Single version.

190 / 195 / 200 cm		
80		120
85		
90		
550 €		825 €

FEET EXCLUDED

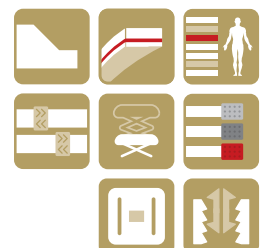


## XPoint 400 FA

- Queen and King versions with standard central reinforced leg.

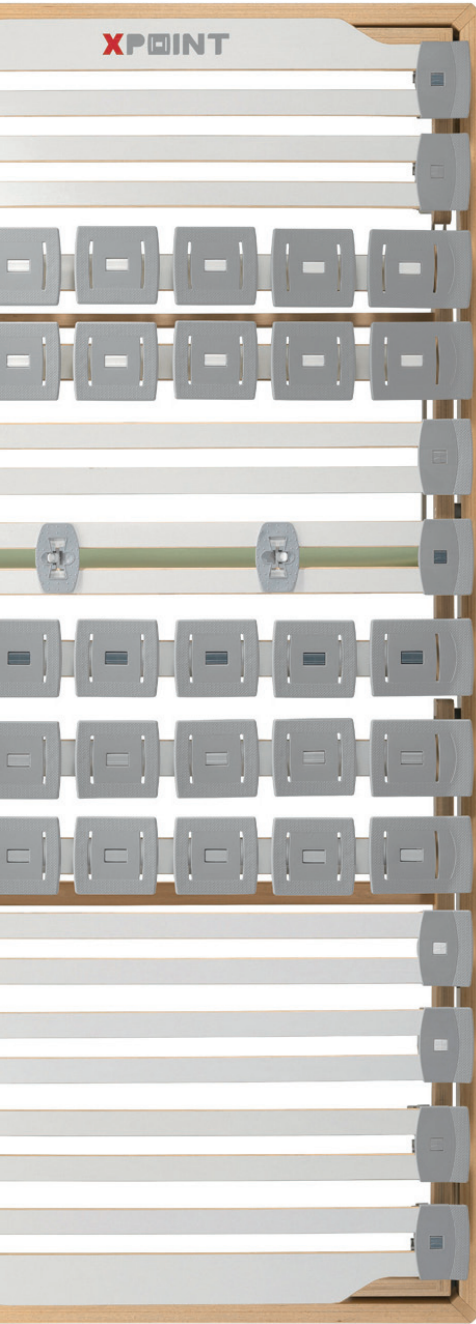
190 / 195 / 200 cm		
160		180
165		
170		
1100 €		1150 €

FEET EXCLUDED



ALL HEIGHTS ARE INTENDED FINISHED FRAME INCLUDING SUSPENSIONS. A SERIES OF ACCESSORIES ARE AVAILABLE AT PAGE 138.

# XPoint 300



- 1 Dynaflex® slats with moderate suspensions for the head
- 2 MultyPoint system for soft and comfortable support of the shoulder area.
- 3 Dynaflex® with cursors to adjust between two levels of firmness and three different heights to personalise lumbar support.
- 4 MultyPoint system with reinforced suspensions for the hips.
- 5 MultyPoint system with moderate suspensions for the legs.
- 6 Dynaflex® slats with soft suspensions for comfortably supporting the calves.
- 7 Dynaflex® slats with moderate support for accommodating the feet.

The MultyPoint three-dimensional elements accommodate the shoulders, pelvis and legs.

The Dynaflex® slats are used to support the head, calves and feet areas.

The combination of the two technologies offers a unique sensation of wellbeing and relaxation.

The adjustment device with three different heights and two firmness levels in the lordosis zone allows personalising XPoint 300 to adapt perfectly to your body.

- Multiply beech wood frame 60x30mm



**DORSAL WELLBEING DEVICES:**  
XPOINT 300 IS AVAILABLE AS A MEDICAL DEVICE.  
SEE PAGE 154.

## Standard feet



### P70

- Set of 60x60mm feet.
- Natural beech.
- Pack of 4 feet.

Finished height	
<b>H 30</b>	<b>H 45</b>
<b>H 35</b>	<b>H 50</b>
<b>H 40</b>	
55 €	65 €

## Optional feet



### P60

- Set of Ø 65mm feet.
- Natural varnish.
- Pack of 4 feet.

Finished height	
<b>H 30</b>	<b>H 45</b>
<b>H 35</b>	<b>H 50</b>
<b>H 40</b>	
33 €	40 €



### Connections

- Central feet to connect single bases.
- Pack of 2 feet.

Finished height	
<b>H 30</b>	<b>H 45</b>
<b>H 35</b>	<b>H 50</b>
<b>H 40</b>	
34 €	37 €

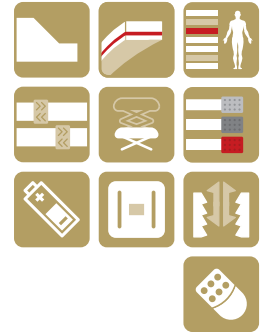


## XPoint 300 R4

- Single version adjustable with 4 motors and memory functions.
- Complies with the Machine 2006/42/CE Directive, appropriately labelled and comes with a user manual.
- Complies with Directive 2004/108/CE on electromagnetic compatibility.

190 / 195 / 200 cm	
80	120
85	
90	
1950 €	2899 €

FEET EXCLUDED

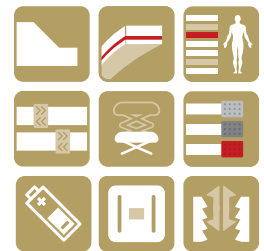


## XPoint 300 RA

- Single version adjustable with two motors.
- Complies with the Machine 2006/42/CE Directive, appropriately labelled and comes with a user manual.
- Complies with Directive 2004/108/CE on electromagnetic compatibility.

190 / 195 / 200 cm	
80	120
85	
90	
1169 €	1765 €

FEET EXCLUDED

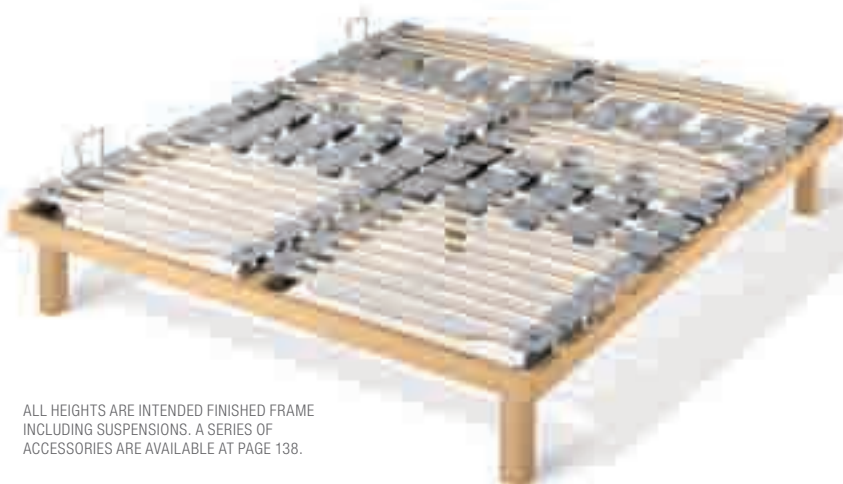


## XPoint 300 NA

- Single version.

190 / 195 / 200 cm	
80	120
85	
90	
485 €	725 €

FEET EXCLUDED



## XPoint 300 FA

- Queen and King versions with standard central reinforced leg.

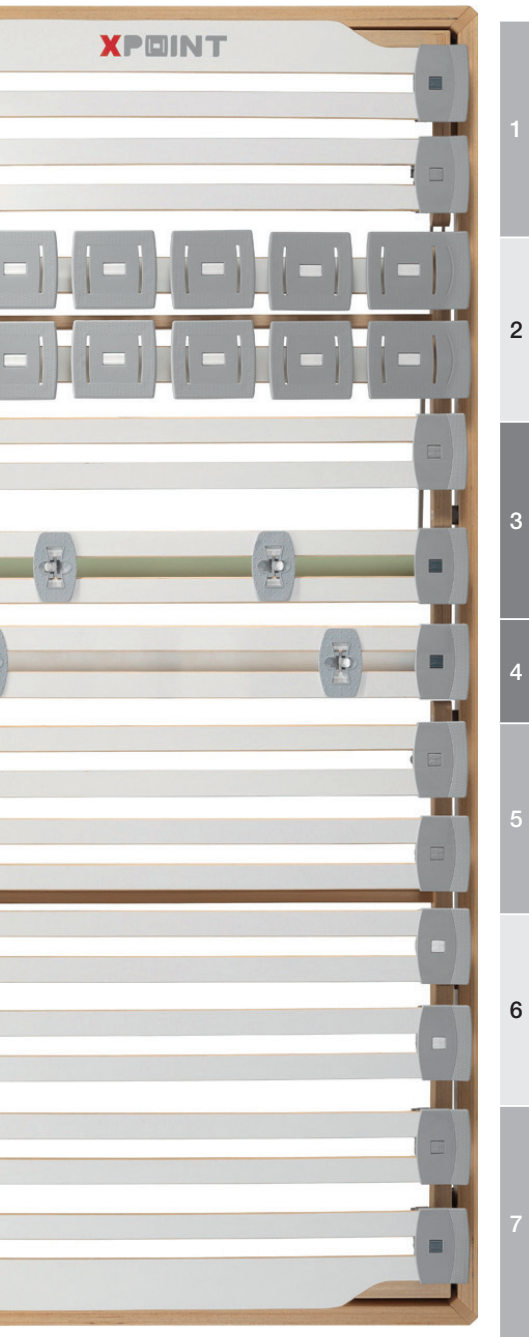
190 / 195 / 200 cm	
160	180
165	
170	
970 €	1020 €

FEET EXCLUDED



ALL HEIGHTS ARE INTENDED FINISHED FRAME INCLUDING SUSPENSIONS. A SERIES OF ACCESSORIES ARE AVAILABLE AT PAGE 138.

# XPoint 200



- 1** Dynaflex® slats with moderate suspensions for the head.
- 2** MultyPoint system for soft and comfortable support of the shoulder area.
- 3** Dynaflex® with cursors to adjust between two levels of firmness and three different heights to personalise lumbar support.
- 4** Dynaflex® slats with reinforced suspensions for the pelvic area and cursors to adjust between two levels of firmness.
- 5** Dynaflex® slats with moderate suspension for comfortable leg support.
- 6** Dynaflex® slats with soft suspensions for comfortably supporting the calves.
- 7** Dynaflex® slats with moderate support for accommodating the feet.

The MultyPoint three-dimensional elements are placed on for the shoulders whilst the Dynaflex® slats cover the head, pelvis, legs, calves and feet areas.

The choice of excellent materials allows the anatomic support to follow the mattress entirely, also because the Dynaflex® slats are less bent making XPoint 200 particularly suitable for side sleepers, while offering a balanced support to the pelvis area.

The adjustment device with three different heights and two firmness levels, in the lordosis and hip zones, allows personalising the XPoint 200 to adapt perfectly to your body.

- Multiply beech wood frame 60x30mm



**DORSAL WELLBEING DEVICES:**  
XPOINT 300 IS AVAILABLE AS A MEDICAL DEVICE.  
SEE PAGE 154.

## Standard feet



### P70

- Set of 60x60mm feet.
- Natural beech.
- Pack of 4 feet.

Finished height	
<b>H 30</b>	<b>H 45</b>
<b>H 35</b>	<b>H 50</b>
<b>H 40</b>	
55 €	65 €

## Optional feet



### P60

- Set of Ø 65mm feet.
- Natural varnish.
- Pack of 4 feet.

Finished height	
<b>H 30</b>	<b>H 45</b>
<b>H 35</b>	<b>H 50</b>
<b>H 40</b>	
33 €	40 €



## Connections

- Central feet to connect single bases.
- Pack of 2 feet.

Finished height	
<b>H 30</b>	<b>H 45</b>
<b>H 35</b>	<b>H 50</b>
<b>H 40</b>	
34 €	37 €

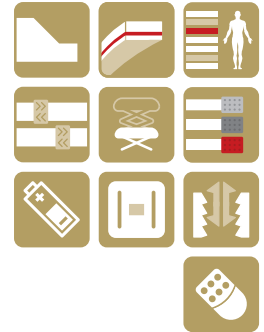


## XPoint 200 R4

- Single version adjustable with 4 motors and memory functions.
- Complies with the Machine 2006/42/CE Directive, appropriately labelled and comes with a user manual.
- Complies with Directive 2004/108/CE on electromagnetic compatibility.

190 / 195 / 200 cm	
80	120
85	
90	
1880 €	2799 €

FEET EXCLUDED



## XPoint 200 RA

- Single version adjustable with two motors
- Complies with the Machine 2006/42/CE Directive, appropriately labelled and comes with a user manual.
- Complies with Directive 2004/108/CE on electromagnetic compatibility.

190 / 195 / 200 cm	
80	120
85	
90	
1099 €	1665 €

FEET EXCLUDED



## XPoint 200 NA

- Single version.

190 / 195 / 200 cm	
80	120
85	
90	
420 €	625 €

FEET EXCLUDED

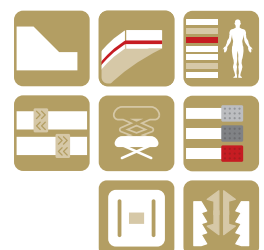


## XPoint 200 FA

- Queen and King versions with standard central reinforced leg.

190 / 195 / 200 cm	
160	180
165	
170	
840 €	890 €

FEET EXCLUDED



ALL HEIGHTS ARE INTENDED FINISHED FRAME INCLUDING SUSPENSIONS. A SERIES OF ACCESSORIES ARE AVAILABLE AT PAGE 138.

# Ies Base

You can rely on IES: it will adapt to suit you and the way you sleep.

With the new-patented technology applied to IES suspensions, you can indulge in a natural, regenerative sleep. The patented IES suspension system has won a technological innovation award from French agency ANVAR. Motor adjustable version is **CE** certified and comes with the user's manual. Dorsal IES Base comes in 4 variants.

- Multi-layered beech frame 65x35mm
- Struktur multiply beech slats 38x8mm
- Independent and interactive Hytrel® suspensions.
- Reinforced Dynaflex® slats.



## Ies Base RA

- Single version adjustable with two motors.
- Complies with the Machine 2006/42/CE Directive, appropriately labelled and comes with a user manual.
- Complies with Directive 2004/108/CE on electromagnetic compatibility.

190 / 195 / 200 cm	
<b>80</b>	<b>120</b>
<b>85</b>	
<b>90</b>	
<b>1199 €</b>	<b>1555 €</b>

FEET EXCLUDED



The peculiarity of this support is the system of independent movements of each suspension, which guarantees the ability to adapt to the curves and postures of the spine in both supine and to the side positions. IES suspension have a greater or lesser degree of firmness to provide strong or mild support where needed as each spine is different from another, our back is a unique structure, with its own history and needs.



**Suspensions are the core of IES line**  
They are independent but mutually interact in adapting to any position of your body.



**Struktur slats**  
The slats used in the IES line feature a raised texture which provides a better aeration and resistance to humidity.



**Back suspensions**  
The suspensions of IES devoted to the back section have been devised to respond with more rigidity and are marked in the anatomical bed base by a darker colour. IES passed a special test in which suspensions had to bear a weight of kg 100 for 60.000 cycles, comparable to the average usage of the product for a period of at least 10 years.



**Comfort for two**  
The total flexibility of IES particularly stands out in the double-bed version. The closeness of suspensions eliminates the uncomfortable feeling of the central bars and ensures more comfort.



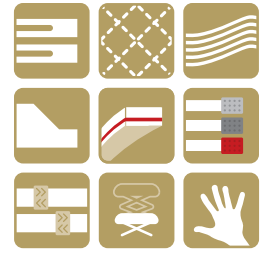


## les Base GA

- Single version manually adjustable.

190 / 195 / 200 cm	
80	120
85	
90	
610 €	850 €

FEET EXCLUDED

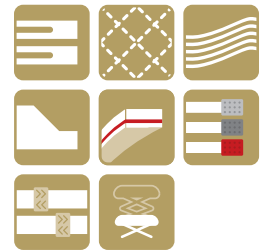


## les Base NA

- Single version.

190 / 195 / 200 cm	
80	120
85	
90	
410 €	565 €

FEET EXCLUDED

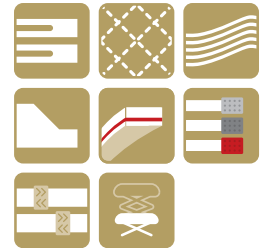


## les Base FA

- Queen and King versions with standard central reinforced leg.

190 / 195 / 200 cm	
160	170
165	
170	
820 €	

FEET EXCLUDED



### Standard feet



#### P60

- Set of  $\varnothing$  65mm feet.
- Natural varnish
- Pack of 4 feet.

Finished height	
H 30	H 45
H 35	
H 40	
33 €	40 €

### Optional feet



#### P40

- Set of  $\varnothing$  65mm feet, cylinder.
- Natural varnish.
- Pack of 4 feet.

Finished height	
H 30	H 45
H 35	
H 40	
35 €	



#### P60 + Castor

- Set of 2  $\varnothing$  65mm P60 feet.
- Set of 2 castor feet with brakes.

Finished height	
H 30 - 35 - 40	
2 x P60	2 Castors
18 €	86 €



#### Connections

- Central feet to connect single bases.
- Pack of 2 feet.

Finished height	
H 30	H 45
H 35	
H 40	
34 €	37 €

# Advance

## The first anatomical wood frame slatted base with Seven Comfort Zones.

Studied to follow the body's contour it assures total synergy between the base and mattress and conforms perfectly to the lumbar and cervical regions. Each Advance suspension embraces three slats so that the sleeping surface includes a much higher number of slats than normal bases allowing the user to feel the best comfort. Dorsal Advance comes in 4 variants.

- Multi-layered beech frame 60x30mm
- Hytrel® suspensions with different shore.
- Struktur multiply beech slats 25x8mm
- Reinforced Dynaflex® slats.
- Seven zones of comfort.



### 7 zones for a perfect anatomical support.

The special colour coding indicates the different hardness (shore) of the suspensions and the different functions of each zone.

1. Moderate support under the head.
2. Soft, comfortable shoulder area.
3. Firmer support, reinforced with Dynaflex® slats, on the lower back area + Multizone SAR.
4. Hip (or lumbar) region reinforced with Dynaflex® slats + Multizone SAR.
5. Moderate support for the thigh area.
6. Comfortably soft calf area.
7. Moderate support under the feet.

## Advance RA

- Single version adjustable with two motors.
- Complies with the Machine 2006/42/CE Directive, appropriately labelled and comes with a user manual.
- Complies with Directive 2004/108/CE on electromagnetic compatibility.



The slats fitted in groups of three on each Hytrel® suspension also cover the edge of the frame, providing high quality sleep even for the most restless people who change position many times during the night. Advance suspensions offer the possibility to use the whole surface of the mattress with the same high performance. In addition, the firmness of the suspensions differentiated into seven zones considerably increases the ability to adapt to the needs of the different parts of the body.

20 mm



Advance suspensions are made of Hytrel®, an elastic memory material that provides the base with great flexibility and long life - they rise above the edge of the frame, making the base flexible at each and every point.

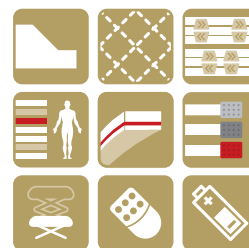
The central slat is also higher than the others, allowing air to circulate constantly and freely between the base and mattress, preventing moisture to accumulate.

190 / 195 / 200 cm
80
85
90
1135 €

FEET EXCLUDED



DORSAL WELLBEING DEVICES:  
ADVANCE IS AVAILABLE AS A MEDICAL  
DEVICE. SEE PAGE 154.



## Advance GA

- Single version manually adjustable with safety slowing down device.

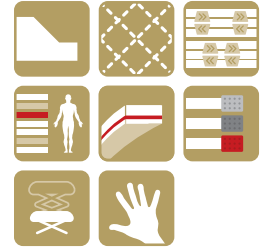


190 / 195 / 200 cm

80  
85  
90

620 €

FEET EXCLUDED



## Advance NA

- Single version.

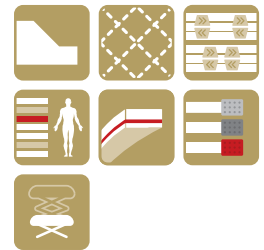


190 / 195 / 200 cm

80  
85  
90

355 €

FEET EXCLUDED



## Advance FA

- Queen and King versions with standard central reinforced leg.

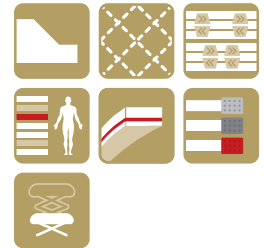


190 / 195 / 200 cm

140  
160  
165  
170

710 €

FEET EXCLUDED



### Standard feet



#### P60

- Set of  $\varnothing$  65mm feet.
- Natural varnish
- Pack of 4 feet.

Finished height	
H 30	H 45
H 35	H 50
H 40	
33 €	40 €

### Optional feet



#### P40

- Set of  $\varnothing$  65mm feet, cylinder.
- Natural varnish.
- Pack of 4 feet.

Finished height	
H 30	H 45
H 35	H 50
H 40	
35 €	



#### P60 + Castor

- Set of 2  $\varnothing$  65mm P60 feet.
- Set of 2 castor feet with brakes.

Finished height	
H 30 - 35 - 40	
2 x P60	2 Castors
18 €	86 €



#### Connections

- Central feet to connect single bases.
- Pack of 2 feet.

Finished height	
H 30	H 45
H 35	H 50
H 40	
34 €	37 €

# Energy

## Research and ergonomics for a quality sleep.

Energy range is the result of an intense work of research, ergonomic studies and the components used on this frame. Hytrel® suspension was first tested on this range and since then many others adopted it. Energy is flexible in each point guaranteeing a higher level of rest. Dorsal Energy comes in 4 variants.

- Multi-layered beech frame 60x30mm
- Multiply beech slats 38x8mm
- Reinforced Dynaflex® slats.
- 4 zones of comfort.
- Hytrel suspensions with different shore (firmness).



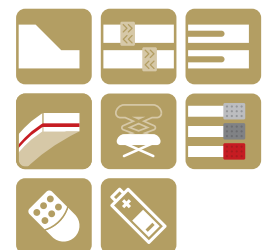
Thanks to the 4 comfort areas, the Energy suspensions adapts to different pressures from the body in a natural way, supporting and easing the vertebral column and thereby encouraging a state of relaxed, refreshing sleep.

1. Shaped slats, positioned in the head areas and fully covering the frame, are designed to give perfect support to the mattress.
2. The shoulder support area features four contoured slats, identifiable by the lighter grey suspensions, offering maximum elasticity and extra comfort.
3. The Dynaflex slats, distinguished by the darker grey suspensions, give the back area a superior quality of support with regard to flexibility and strength.
4. The greatest load area is reinforced with six extra slats and may be adjusted for intensity, according to personal preference, thanks to six practical cursors.

## Energy RA

- Single version adjustable with two motors.
- Complies with the Machine 2006/42/ CE Directive, appropriately labelled and comes with a user manual.
- Complies with Directive 2004/108/ CE on electromagnetic compatibility.

190 / 195 / 200 cm	
80	120
85	
90	
1105 €	1435 €



FEET EXCLUDED

**DORSAL WELLBEING DEVICES:**  
ENERGY IS AVAILABLE AS A MEDICAL DEVICE. SEE PAGE 154.



The slats fitted in pairs on each Hytrel® suspension also cover the edge of the frame, providing good quality sleep. Energy suspensions offer the possibility to use the whole surface of the mattress with the same performance. In addition, the firmness of the suspensions is differentiated in 3 grades.

20 mm



The special designed Energy's suspensions are made in Hytrel®an innovative material with elastic memory, which ensures high, progressive flexibility and unique durability.

Thanks to the independence of the two elements making up each single suspension, which flexes up to 20mm, the quality of the springing is enhanced to the full, giving the slats an exceptional capacity of adaptation to body weight and movements when at rest.

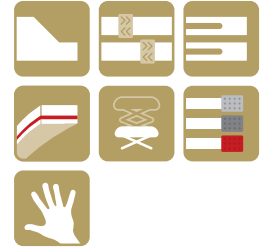


## Energy GA

- Single version manually adjustable with safety slowing down device.

190 / 195 / 200 cm	
80	120
85	
90	
585 €	740 €

FEET EXCLUDED

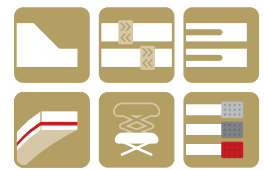


## Energy NA

- Single version.

190 / 195 / 200 cm	
80	120
85	
90	
335 €	455 €

FEET EXCLUDED



## Energy FA

- Queen and King versions with standard central reinforced leg.

190 / 195 / 200 cm	
140	180
160	
165	
170	
670 €	720 €

FEET EXCLUDED



### Standard feet



#### P60

- Set of  $\varnothing$  65mm feet.
- Natural varnish
- Pack of 4 feet.

Finished height	
H 30	H 45
H 35	
H 40	
33 €	40 €

### Optional feet



#### P40

- Set of  $\varnothing$  65mm feet, cylinder.
- Natural varnish.
- Pack of 4 feet.

Finished height	
H 30	H 45
H 35	
H 40	
35 €	



#### P60 + Castor

- Set of 2  $\varnothing$  65mm P60 feet.
- Set of 2 castor feet with brakes.

Finished height	
H 30 - 35 - 40	
2 x P60	2 Castors
18 €	86 €



#### Connections

- Central feet to connect single bases.
- Pack of 2 feet.

Finished height	
H 30	H 45
H 35	
H 40	
34 €	37 €

# Sintesi

## Quality in perfect synthesis.

The key features of this range are a strong frame, multiply beech slats and durable Hytre!® suspensions, all carefully selected to obtain a high quality slatted base at an interesting price.

Anatomic and comfortable. Sintesi is capable of offering good sleep. Dorsal Sintesi comes in 4 variants.

- Multi-layered beech frame 60x25mm
- Hytre!® suspensions.
- Multiply beech slats 36x8mm
- Reinforced and adjustable lumbar area.



## Sintesi RA

- Single version adjustable with two motors.
- Complies with the Machine 2006/42/ CE Directive, appropriately labelled and comes with a user manual.
- Complies with Directive 2004/108/ CE on electromagnetic compatibility.

190 / 195 / 200 cm	
80	120
85	
90	
WITH ECONOMY MOTOR	
750 €	975 €

FEET EXCLUDED



Sintesi's suspensions are made of Hytre! an innovative material with elastic memory, which ensures high, progressive flexibility and unique durability. Thanks to the independence of the two elements making up each single suspension, which flexes up to 25mm, the quality of the springing is enhanced to the full, giving the slats an exceptional capacity of adaptation to body weight and movements when at rest.



## Sintesi GA

- Single version manually adjustable.

190 / 195 / 200 cm	
80	120
85	
90	
360 €	500 €

FEET EXCLUDED



## Sintesi NA

- Single version.

190 / 195 / 200 cm	
80	120
85	
90	
230 €	320 €

FEET EXCLUDED



## Sintesi FA

- Queen and King versions with standard central reinforced leg.

190 / 195 / 200 cm	
140	
160	
165	
170	
460 €	

FEET EXCLUDED



### Standard feet



#### P60

- Set of  $\varnothing$  65mm feet.
- Natural varnish
- Pack of 4 feet.

Finished height	
H 30	H 45
H 35	
H 40	
33 €	40 €

### Optional feet



#### P40

- Set of  $\varnothing$  65mm feet, cylinder.
- Natural varnish.
- Pack of 4 feet.

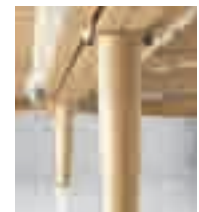
Finished height	
H 30	H 45
H 35	
H 40	
35 €	



#### P60 + Castor

- Set of 2  $\varnothing$  65mm P60 feet.
- Set of 2 castor feet with brakes.

Finished height	
H 30 - 35 - 40	
2 x P60	2 Castors
18 €	86 €



#### Connections

- Central feet to connect single bases.
- Pack of 2 feet.

Finished height	
H 30	H 45
H 35	
H 40	
34 €	37 €

# Sana

## Essentiality and attention to details for a healthy sleep.

Sana range is quality sleep in an essential slatted base without turning down comfort and care for details. Noiseless rubber holders carry the slats inside the frame making it sturdy and durable.

Rounded angles with finger-joint corners to improve strength, Sana is the essence of a good sleep. Dorsal Sana comes in 8 variants.






- Multi-layered beech frame 60x30mm
- Strong and silent slat holders.
- Multiply beech slats 53x8mm
- Reinforced and adjustable (till 90cm) lumbar area.



190 / 195 / 200 cm	
<b>80</b>	<b>120*</b>
<b>85</b>	
<b>90</b>	

## Sana RA

- Single version adjustable with two motors
- Complies with the Machine 2006/42/ **CE** Directive, appropriately labelled and comes with a user manual.
- Complies with Directive 2004/108/ **CE** on electromagnetic compatibility.
- \* Reinforced and adjustable (till 90cm) lumbar area.

WITH STANDARD MOTOR				
790 €	1020 €			
WITH ECONOMY MOTOR				
720 €	950 €			

FEET EXCLUDED



**Holders**   
The special, effective slat holders of the Sana range are unique for strength, durability and silence.



**Rounded angles**   
The corners are exclusively finger-joint type, ensuring solidity.



**Joints**   
The articulated joints of the motor and manual adjustable versions are made with craftsman-like care.





## Sana FRA

- Queen and King versions adjustable with four motors.
- Complies with the Machine 2006/42/ CE Directive, appropriately labeled and comes with a user manual.
- Complies with Directive 2004/108/ CE on electromagnetic compatibility.
- With standard central reinforced leg.

190 / 195 / 200 cm	
<b>140 - 160 - 165 - 170</b>	
WITH STANDARD MOTOR	
1580 €	
WHIT ECONOMY MOTOR	
1440 €	



FEET EXCLUDED



## Sana GA

- Single version manually adjustable.
- \* Reinforced and adjustable (till 90cm) lumbar area.

190 / 195 / 200 cm	
<b>80</b>	<b>120*</b>
<b>85</b>	
<b>90</b>	
<b>330 €</b>	<b>455 €</b>



FEET EXCLUDED



## Sana FGA

- Queen and King versions manually adjustable.
- With standard central reinforced leg.

190 / 195 / 200 cm	
<b>140</b>	
<b>160</b>	
<b>165</b>	
<b>170</b>	
<b>660 €</b>	



FEET EXCLUDED



## Sana B

- Folding guest bed (folded 80x40x112).

folding bed 200 cm	mattress 198 cm	
	<b>Foam</b> 78 x 10 H	<b>Spring</b> 78 x 12 H
213 €	135 €	145 €



## Sana NA

- Single version.
- \* Reinforced and adjustable (till 90cm) lumbar area.

190 / 195 / 200 cm	
<b>80</b>	<b>120*</b>
<b>85</b>	
<b>90</b>	
<b>190 €</b>	<b>265 €</b>



FEET EXCLUDED



## Sana FA

- Queen and King versions with standard central reinforced leg.

190 / 195 / 200 cm	
<b>140</b>	<b>180</b>
<b>160</b>	
<b>165</b>	
<b>170</b>	
<b>380 €</b>	<b>430 €</b>



FEET EXCLUDED



## Sana MA

- Queen and King versions, no central beam.
- With two standard central reinforced legs.

190 / 195 / 200 cm	
<b>140</b>	
<b>160</b>	
<b>165</b>	
<b>170</b>	
<b>375 €</b>	

FEET EXCLUDED

### Standard feet



#### P60

- Set of  $\varnothing$  65mm feet.
- Natural varnish
- Pack of 4 feet.

Finished height	
<b>H 30</b>	<b>H 45</b>
<b>H 35</b>	
<b>H 40</b>	
<b>33 €</b>	<b>40 €</b>

### Optional feet



#### P40

- Set of  $\varnothing$  65mm feet, cylinder.
- Natural varnish.
- Pack of 4 feet.

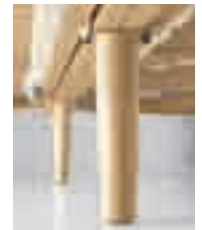
Finished height	
<b>H 30</b>	
<b>H 35</b>	
<b>H 40</b>	
<b>35 €</b>	



#### P60 + Castor

- Set of 2  $\varnothing$  65mm P60 feet.
- Set of 2 castor feet with brakes.

Finished height	
<b>H 30 - 35 - 40</b>	
2 x P60	2 Castors
<b>18 €</b>	<b>86 €</b>



#### Connections

- Central feet to connect single bases.
- Pack of 2 feet.

Finished height	
<b>H 30</b>	<b>H 45</b>
<b>H 35</b>	
<b>H 40</b>	
<b>34 €</b>	<b>37 €</b>



WOOD

## Idea Headboard

Multi-layered beech headboard, suitable for all of the following wood frame slatted bases:

- XPoint    - les Base    - Advance    - Energy
- Sintesi    - Sana            - Forma        - Viva

<b>90</b>	<b>120</b>	<b>160</b>	<b>170</b>
91 x 65 x 1,3 cm	122 x 65 x 1,3 cm	162 x 65 x 1,3 cm	172 x 65 x 1,3 cm
245 €	345 €	425 €	450 €

## Forma

### Great performances and a rigorous design.

Forma matches the great features of sophisticated slatted bases but with an essential look. Minimalistic design and natural rest. Dorsal Forma comes in 4 variants.

- Multi-layered beech frame 60x25mm
- Multiply beech slats 36x8mm
- Hytrel suspensions.
- Reinforced and adjustable lumbar are.



## Forma RA

- Single version adjustable with two motors.
- Complies with the Machine 2006/42/ CE Directive, appropriately labelled and comes with a user manual.
- Complies with Directive 2004/108/ CE on electromagnetic compatibility.



190 / 195 / 200 cm	
80	120
85	
90	
WITH ECONOMY MOTOR	
665 €	855 €

FEET EXCLUDED



### Suspensions

Forma range suspensions with their new design offer the typical features of Dorsal systems: strength, durability and adaptation to pressure. The accentuated characteristics of the springing offer ideal conditions for best relaxation.

### Cursors

Adjustable cursors (sliders) may be used to vary the response of the slats, deciding whether to increase or reduce the rigidity of this part of the anatomical system.



## Forma GA

- Single version manually adjustable.

190 / 195 / 200 cm	
<b>80</b>	<b>120</b>
<b>85</b>	
<b>90</b>	
<b>299 €</b>	<b>415 €</b>

FEET EXCLUDED



## Forma NA

- Single version.

190 / 195 / 200 cm	
<b>80</b>	<b>120</b>
<b>85</b>	
<b>90</b>	
<b>163 €</b>	<b>230 €</b>

FEET EXCLUDED



## Forma FA

- Queen and King versions with standard central reinforced leg.

190 / 195 / 200 cm	
<b>140</b>	
<b>160</b>	
<b>165</b>	
<b>170</b>	
<b>326 €</b>	

FEET EXCLUDED



### Standard feet



#### P60

- Set of  $\varnothing$  65mm feet.
- Natural varnish.
- Pack of 4 feet.

Finished height	
<b>H 30</b>	<b>H 45</b>
<b>H 35</b>	
<b>H 40</b>	
<b>33 €</b>	<b>40 €</b>

### Optional feet



#### P40

- Set of  $\varnothing$  65mm feet, cylinder.
- Natural varnish.
- Pack of 4 feet.

Finished height	
<b>H 30</b>	
<b>H 35</b>	
<b>H 40</b>	
<b>35 €</b>	



#### P60 + Castor

- Set of 2  $\varnothing$  65mm P60 feet.
- Set of 2 castor feet with brakes.

Finished height	
<b>H 30 - 35 - 40</b>	
2 x P60	2 Castors
<b>18 €</b>	<b>86 €</b>



#### Connections

- Central feet to connect single bases.
- Pack of 2 feet.

Finished height	
<b>H 30</b>	<b>H 45</b>
<b>H 35</b>	
<b>H 40</b>	
<b>34 €</b>	<b>37 €</b>

## Viva

### Great materials and minimalistic design.

Viva is the first wood frame slatted base created by Dorsal. A range with all the basic variants to satisfy quality and price issues. Noiseless rubber holders carry the slats inside the frame making it sturdy and durable. Dorsal Viva comes in 4 variants.

- Multi-layered beech frame 60x25mm
- Multiply beech slats 53x8mm



## Viva RA

- Single version adjustable with two motors.
- Complies with the Machine 2006/42/ CE Directive, appropriately labelled and comes with a user manual.
- Complies with Directive 2004/108/ CE on electromagnetic compatibility.



190 / 195 / 200 cm

80  
85  
90

WITH ECONOMY MOTOR

590 €

FEET EXCLUDED



### Holders

The special, effective slat holders of the Viva range are unique for strength, durability and silence.

## Dorsal Roll, transform a standard frame in a slatted system.

Dorsal Roll was conceived to transform an old standard, perhaps metal mash frame, in a more comfortable and stronger slatted base. Just unroll it inside the existing frame.



## Roll

- SEBS slat holders.
- 15 Multiply beech slats 53x8 mm.

190 cm

79  
84  
89

66 €



## Viva GA

- Single version manually adjustable.

190 / 195 / 200 cm

**80**  
**85**  
**90**

270 €

FEET EXCLUDED



## Viva NA

- Single version.

190 / 195 / 200 cm

**80**  
**85**  
**90**

132 €

FEET EXCLUDED



## Viva FA

- Queen and King versions with standard central reinforced leg.

190 / 195 / 200 cm

**140**  
**160**  
**165**  
**170**

264 €

FEET EXCLUDED

### Standard feet



#### P60

- Set of  $\varnothing$  65mm feet.
- Natural varnish.
- Pack of 4 feet.

Finished height	
<b>H 30</b>	<b>H 45</b>
<b>H 35</b>	<b>H 50</b>
<b>H 40</b>	
33 €	40 €

### Optional feet



#### P40

- Set of  $\varnothing$  65mm feet, cylinder.
- Natural varnish.
- Pack of 4 feet.

Finished height	
<b>H 30</b>	
<b>H 35</b>	
<b>H 40</b>	
35 €	



#### P60 + Castor

- Set of 2  $\varnothing$  65mm P60 feet.
- Set of 2 castor feet with brakes.

Finished height	
<b>H 30 - 35 - 40</b>	
2 x P60	2 Castor
18 €	86 €



#### Connections

- Central feet to connect single bases.
- Pack of 2 feet.

Finished height	
<b>H 30</b>	<b>H 45</b>
<b>H 35</b>	<b>H 50</b>
<b>H 40</b>	
34 €	37 €

## Anatomic steel frame slatted bases

122. Steel frame bases

124. Dynamic

125. Super

132. Fisika

134. Forza

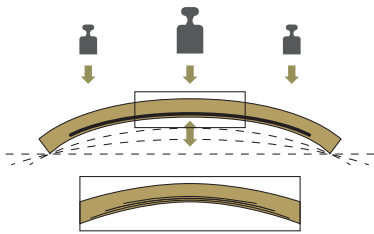
136. Varial

138. Accessories









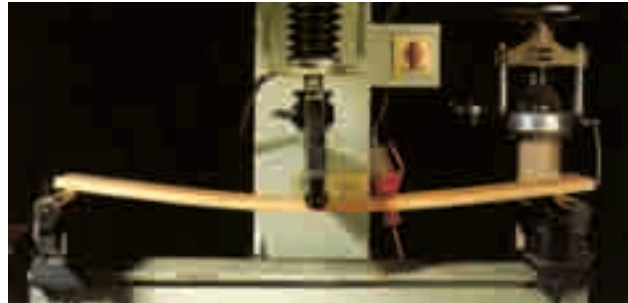
## Dynaflex® slats exclusive Dorsal® technology

The slats are the heart of the bed base.

That is why Dorsal has chosen Dynaflex, a slat that is the result of innovative research with a high technological content that features special patented inserts that make it unique for quality, performance and durability.

Only Dorsal uses Dynaflex, to ensure practically unique comfort in the back area, which responds in a uniform way to stress along the entire slat and adapts to all positions of relaxation. Quality and wellbeing are perfectly combined with performance and durability that are difficult to beat.

Tests and controls by the most authoritative German laboratories, such as W. Klauditz Institut Fraunhofer and the Tuv.Sudwest, have certified that the innovative Dynaflex slats confer a clearly superior anatomical adaptation to the bed base, thanks to the special patented inserts in the traction strip inside each individual slat. Laboratory tests show that elasticity is improved over the entire slat. The flexibility of Dynaflex is even, from the centre of the ends of the slat.



### The quality of Dorsal slats also depends on the selection of the beech wood coming from controlled cultivations.

The multiply is bent hot using non-pollutant, chlorine-free resins. Meticulous checks are made to ensure the right degree of humidity, stability, strength and flexibility. Each Dorsal product comes with certificate of authenticity and warranty to test the finished quality.



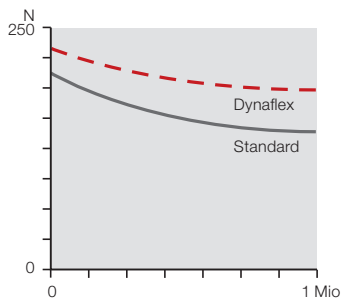
#### TUV Sudwest

German certification agency and quality inspection of production process of beech slats used on Dorsal frames: WERZALIT.

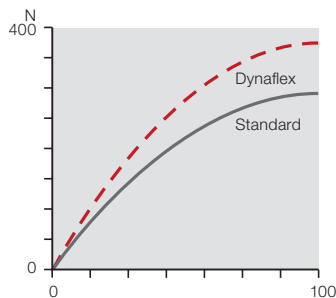


#### W: Klauditz Institut Fraunhofer

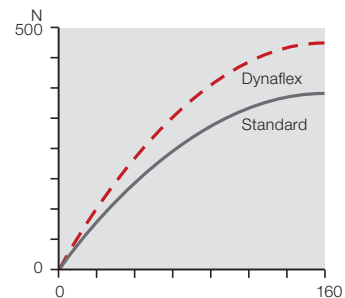
German institute where tests of resistance to weight, humidity and breaking are run on the exclusive patented Dynaflex® beech slats.



With Dynaflex® there is 40% more load resistance. Dynaflex® also has an "elastic memory", which means a longer life for the slat.



Resistance to humidity is increased by 35% in Dynaflex® compared to traditional slats.



The breaking load of Dynaflex® is 25% higher than of a traditional slat. The back area can therefore withstand even heavy loads.

# Dorsal® anatomic slatted bases Medical Devices

All solutions adopted by Dorsal® in designing and constructing Medical Devices adhere to stringent safety principles\* and take into account the most recent and generally recognised technological advancements.

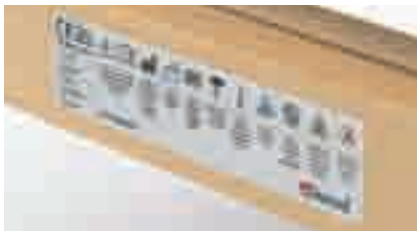
For this purpose, Dorsal® has further improved its Medical Device ergonomic support structures, which are accompanied by a detailed manual for their correct use and maintenance, aimed at ensuring optimal safety conditions for the user and any other operator.

Lateral stoppers keep the mattress in place



Legs are equipped with a safe and simple self-locking mechanism.

Labels prescribed under Directive 2007/47/CE



Warning labels

Efficient system for slowing down the head and feet sections

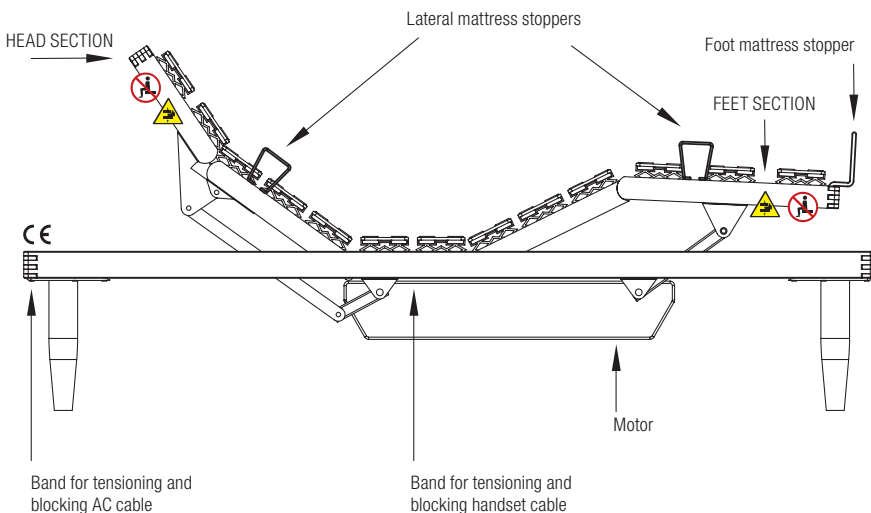


Practical bands free the underside of the base from electric cables

## Dorsal® motorised ergonomic support structures are CE marked

**Dorsal® motorised ergonomic support structures are not only compliant with EC Directive 93/42CE on Medical Devices and following Directive 2007/47/CE, but also respect the provisions of Directive 2006/42/CE on machinery, and of Directive 2004/108/CE on electromagnetic compatibility.**

The products' CE mark is indicated by a specific product label and by the manufacturer's Declaration of Conformity, featured at the foot of the instructions manual.



**Fall hazard:**  
do not sit on head or feet areas when not in a horizontal position



**Entrapment hazard**



**Directive**  
93/42/CEE  
2006/42/CE

Mod. GA versions with manual mechanisms include an efficient system for slowing down the head and feet sections.

\* Essential requisite prescribed by European Directive 2007/47/CE concerning Medical Devices, and by Standard UNI CEI EN ISO 14971, which sets out hazard management measures for Medical Device products.

# Dynamic

## The first anatomical steel frame slatted base with Seven Comfort Zones.

Studied to follow the body's contour it assures total synergy between the base and mattress and conforms perfectly to the lumbar and cervical regions.

Dorsal Dynamic comes in 6 variants.

- Steel frame 50x25mm
- Powder paint non-toxic and scratchproof.
- Multiply beech slats 38x8mm
- Hytre!® suspensions with different shore (firmness).
- Reinforced Dynaflex® slats.
- Seven zones of comfort.



### 7 zones for a perfect anatomical support.

The special colour coding indicates the different hardness (shore) of the suspensions and the different functions of each zone.

1. Moderate support under the head.
2. Soft, comfortable shoulder area.
3. Firmer support, reinforced with Dynaflex® slats, on the lower back area + Multizone SAR
4. Hip (or lumbar) region reinforced with Dynaflex® slats + Multizone SAR
5. Moderate support for the thigh area.
6. Comfortably soft calf area.
7. Moderate support under the feet.

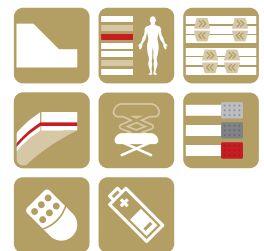
## Dynamic RA

- Single version adjustable with two motors.
- Complies with the Machine 2006/42/ CE Directive, appropriately labelled and comes with a user manual.
- Complies with Directive 2004/108/ CE on electromagnetic compatibility .

190 / 195 / 200 cm	
80	120
85	
90	
915 €	1280 €

FEET EXCLUDED

**DORSAL WELLBEING DEVICES:**  
DYNAMIC IS AVAILABLE AS A MEDICAL DEVICE. SEE PAGE 154.



The slats fitted in pairs on each Hytre!® suspension also cover the edge of the frame, providing high quality sleep even for the most restless people who change position many times during the night. Dynamic suspensions offer the possibility to use the whole surface of the mattress with the same high performance. In addition, the firmness of the suspensions differentiated into seven zones considerably increases the ability to adapt to the needs of the different parts of the body.

25 mm



Dynamic suspensions are made of Hytre!®, an elastic memory material that provides the base with great flexibility and long life - they rise above the edge of the frame, making the base flexible at each and every point.



## Dynamic DRA

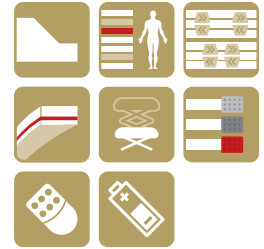
- Queen and King versions adjustable with two motors.
- Complies with the Machine 2006/42/ **CE** Directive comes with a user manual.
- Complies with Directive 2004/108/ **CE** on electromagnetic compatibility.
- With standard central reinforced leg.

190 / 195 / 200 cm

**160**  
**165**  
**170**

**1875 €**

FEET EXCLUDED



## Dynamic GA

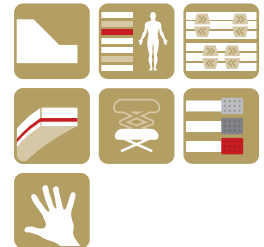
- Single version manually adjustable with safety slowing down device.

190 / 195 / 200 cm

<b>80</b>	<b>120</b>
<b>85</b>	
<b>90</b>	

<b>565 €</b>	<b>740 €</b>
--------------	--------------

FEET EXCLUDED



## Dynamic DGA

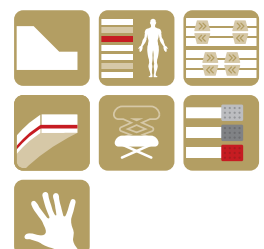
- Queen and King versions manually adjustable.
- With standard central reinforced leg.

190 / 195 / 200 cm

**160**  
**165**  
**170**

**915 €**

FEET EXCLUDED



# Dynamic



## Dynamic NA

- Single version.

190 / 195 / 200 cm	
80	120
85	
90	
275 €	385 €

FEET EXCLUDED



## Dynamic FA

- Queen and King versions.

190 / 195 / 200 cm	
140	180
160	
165	
170	
550 €	600 €

FEET EXCLUDED



### Standard feet



- Pack of 4 feet.

Finished height	
H 30	H 45
H 35	H 50
H 40	
26 €	31 €

### Optional feet



**P40**  
 - Set of  $\varnothing$  65mm feet, cylinder  
 - Natural varnish.  
 - Pack of 4 feet.

Finished height	
H 33	
H 38	
H 43	
35 €	



**P60**  
 - Set of  $\varnothing$  65mm feet.  
 - Natural varnish.  
 - Pack of 4 feet.

Finished height	
H 28	H 48
H 33	H 53
H 38	
H 43	
33 €	40 €



**Connections**  
 - Central feet to connect single bases  
 - Pack of 2 feet.

Finished height	
H 30	H 45
H 35	H 50
H 40	
32 €	36 €

# Dorsal. La salute vien dormendo.

Su quindici mesi di faggio in strati lamellari curvati a flessibilità indipendente. Ogni parte del corpo viene sostenuta da Dorsal in relazione al peso ed alla forma anatomica.



Distribuzione Dorsal a diffusione pubblica.

 In versione matrimoniale con piedi  
 In versione matrimoniale





# Dorsal. La salute vien dormendo

Su quindici mesi di faggio  
 a flessibilità indipendente.  
 Ogni parte del corpo  
 viene sostenuta da Dorsal  
 in relazione al peso  
 ed alla forma anatomica.

Dorsal. Finiture



Distribuzione Dorsal a diffusione pubblica.

Dorsal ha inventato il letto di ferro. Più forte, più sano e più economico. Dorsal.




INSEPI

# Since 1977 Dorsal Super

The strongest and most durable range of steel frame slatted bases.

# Super

## The strongest and most durable range of steel frame slatted bases.

More than 30 years ago, the Super range, was born to satisfy the needs of a more innovative, comfortable but yet strong frame. Since then some changes have been made but Super stays the same with a patent slat holder that is tough, noiseless and can carry heavy duty weights. Super puts together quality of rest, range length and years of experience. Dorsal Super comes in 12 variants.

- Steel frame 40x3 mm (50x30mm from 120cm)
- Powder paint non-toxic and scratchproof
- Multiply beech slats 68x8mm
- 4 zones of comfort



## Super MRA

- Queen and King versions adjustable with two motors, no central beam.
- Complies with the Machine 2006/42/ CE Directive, appropriately labelled and comes with a user manual.
- Complies with Directive 2004/108/ CE on electromagnetic compatibility.

### Four different comfort areas proving better anatomical adaptation.

- 1 Dorsal Super, great resistance and best anatomical adaptation thanks to unique features
- 2 Two shaped slats, positioned in the shoulder support area, ensure high elasticity and comfort.
- 3 Six Dynaflex slats, distinguished by the blue slat holders, give the back area a superior quality of support, flexibility and strength.
- 4 The area where most body weight is concentrated is reinforced with three extra slats and can be adjusted for intensity with six practical cursors.

190 / 195 / 200 cm
<b>140 - 160 - 165 - 170</b>
1155 €
FEET EXCLUDED



The three sliders (cursors) regulate the slats on the lumbar zone making it possible to adjust the firmness of the support in an area important for the body's biomechanical balance because it is here that the muscle fibres interact with the diaphragm (breathing muscle) and the major hip flexor and pelvis regulator muscle.



The well tested slat holders of the Super range, with exclusive Dorsal patent, has always been highly appreciated for its resistance and silence.



Dorsal Super, unique features which ensure maximum strength and durability plus the serenity coming from a natural relaxed position of the body.





## Super RA

- Single version adjustable with two motors.
- Complies with the Machine 2006/42/CE Directive, appropriately labelled and comes with a user manual.
- Complies with Directive 2004/108/CE on electromagnetic compatibility.
- \* Reinforced and adjustable (till 90cm) lumbar area.

190 / 195 / 200 cm

80	120*
85	
90	

WITH STANDARD MOTOR

730 €	935 €
-------	-------

WITH ECONOMY MOTOR

655 €	870 €
-------	-------

FEET EXCLUDED



## Super FRA

- Queen and King versions adjustable with four motors.
- Complies with the Machine 2006/42/CE Directive, appropriately labelled and comes with a user manual.
- Complies with Directive 2004/108/CE on electromagnetic compatibility.

190 / 195 / 200 cm

160 - 165 - 170

WITH STANDARD MOTOR

1460 €

WITH ECONOMY MOTOR

1310 €

FEET EXCLUDED



## Super GA

- Single version manually adjustable.
- \* Reinforced and adjustable (till 90cm) lumbar area.

190 / 195 / 200 cm

80	120*
82	
85	
90	

290 €	410 €
-------	-------

FEET EXCLUDED



## Super FGA

- Queen and King versions manually adjustable.

190 / 195 / 200 cm

160 - 165 - 170

580 €

FEET EXCLUDED



## Super MGA

- Queen and King versions, manually adjustable, no central beam.

190 / 195 / 200 cm

140 - 160 - 165 - 170

560 €

FEET EXCLUDED



## Super ZA, no central beam, and ASD shock absorbers.

Dorsal developed this specific model matching the properties of Dynaflex slats and the ASD (Anatomic System Dorsal) to create a differentiated anatomy along the slatted base. White ASD for a softer area, blue ones for a harder area. ZA model is really flexible and comfortable.



Patent ASD shock absorbers grant a reinforced lumbar area and an independent spring system underneath the beech slats.

## Super ZA

- Queen and King versions, no central beam, ASD shock absorbers.

190 / 195 / 200 cm

140  
160  
165  
170

405 €

FEET EXCLUDED



## Super FA

- Queen and King versions.

190 / 195 / 200 cm

140	180
160	
165	
170	

310 €	360 €
-------	-------

FEET EXCLUDED



## Super MA

- Queen and King versions, no central beam.

190 / 195 / 200 cm

140  
150  
160  
165  
170

335 €

FEET EXCLUDED





## Super VA

- Single version manually adjustable, double headrest.

190 / 195 / 200 cm

80  
85  
90

335 €

PIEDI ESCLUSI



## Super NA

- Single version.

- \* Adjustable cursors up to 100cm width.

190 / 195 / 200 cm

80	100
82	110*
85	120*
90	

155 € | 240 €

FEET EXCLUDED



## Super B

- Folding guest bed (80x38x108/113 when folded).

folding bed  
190 / 200 cm

80

175 €

Mattress 188 / 198 cm

foam 78 x 10 H	spring 78 x 12 H
-------------------	---------------------

135 €

145 €

### Standard feet



- Pack of 4 feet.

Finished height	
H 30	H 45
H 35	H 50
H 40	
26 €	31 €

### Optional feet



#### P40

- Set of ø 65mm feet, cylinder  
- Natural varnish.  
- Pack of 4 feet.

Finished height	
H 33	
H 38	
H 43	
35 €	



#### P60

- Set of ø 65mm feet.  
- Natural varnish.  
- Pack of 4 feet.

Finished height	
H 28	
H 33	H 48
H 38	H 53
H 43	
33 €	40 €



#### Connections

- Central feet to connect single bases  
- Pack of 2 feet.

Finished height	
H 30	H 45
H 35	H 50
H 40	
32 €	36 €

steel

# Fisika

## Research and minimal.

The key features of this range are a strong steel frame, multiply beech slats and durable Hytre!® suspensions, all carefully selected to obtain a high quality slatted base at an interesting price.

Dorsal Fisika comes in 4 variants.

- Steel frame 40x30mm.
- Powder paint non-toxic and scratchproof.
- Multiply beech slats 36x8mm
- Hytre!® suspensions.
- Reinforced and adjustable lumbar area.



## Fisika RA

- Single version adjustable with two motors.
- Complies with the Machine 2006/42/ CE Directive, appropriately labelled and comes with a user manual.
- Complies with Directive 2004/108/ CE on electromagnetic compatibility.



190 / 195 / 200 cm	
80	120
85	
90	
WITH ECONOMY MOTOR	
745 €	1040 €

FEET EXCLUDED

Fisika's suspensions **are made of Hytre!® an innovative material with elastic memory**, which ensures high, progressive flexibility and unique durability. Thanks to the independence of the two elements making up each single suspension, which flexes up to 25mm, the quality of the springing is enhanced to the full, giving the slats an exceptional capacity of adaptation to body weight and movements when at rest.





## Fisika GA

- Single version manually adjustable.

190 / 195 / 200 cm	
80	120
85	
90	
355 €	500 €

FEET EXCLUDED



## Fisika NA

- Single version.

190 / 195 / 200 cm	
80	120
85	
90	
220 €	310 €

FEET EXCLUDED



## Fisika FA

- Queen and King versions.

190 / 195 / 200 cm	
140	
160	
165	
170	
440 €	

FEET EXCLUDED



### Standard feet



- Pack of 4 feet.

Finished height	
H 30	H 45
H 35	H 50
H 40	
26 €	31 €

### Optional feet



#### P40

- Set of ø 65mm feet, cylinder  
- Natural varnish.  
- Pack of 4 feet.

Finished height	
H 33	
H 38	
H 43	
35 €	



#### P60

- Set of ø 65mm feet.  
- Natural varnish.  
- Pack of 4 feet.

Finished height	
H 28	
H 33	H 48
H 38	H 53
H 43	
33 €	40 €



#### Connections

- Central feet to connect single bases  
- Pack of 2 feet.

Finished height	
H 30	H 45
H 35	H 50
H 40	
32 €	36 €

steel

# Forza

## Design, sturdiness, flexibility.

Anatomic slatted base for those who choose the strength and durability of Dorsal's steel frames. Suspension with double holders, Forza is exclusive care for details. Dorsal Forza comes in 4 variants.

- Steel frame 40x30mm
- Powder paint non-toxic and scratchproof.
- Multiply beech slats 36x8mm
- Hytrell® suspensions.
- Reinforced and adjustable lumbar area.



## Forza RA

- Single adjustable with two motors.
- Complies with the Machine 2006/42/CE Directive, appropriately labelled and comes with a user manual.
- Complies with Directive 2004/108/CE on electromagnetic compatibility.

190 / 195 / 200 cm
<b>80</b>
<b>85</b>
<b>90</b>
WITH ECONOMY MOTOR
<b>675 €</b>

FEET EXCLUDED

## Suspensions

Forza range suspensions with their new design offer the typical features of Dorsal systems: strength, durability and adaptation to pressure. The accentuated characteristics of the springing offer ideal conditions for best relaxation. Adjustable cursors allow different comfort levels depending on personal needs and requirements.





## Forza GA

- Single version manually adjustable.

190 / 195 / 200 cm

80  
85  
90

299 €

FEET EXCLUDED



## Forza NA

- Single version.

190 / 195 / 200 cm

80  
85  
90

120

160 €

225 €

FEET EXCLUDED



## Forza FA

- Queen and King versions.

190 / 195 / 200 cm

140  
160  
165  
170

320 €

FEET EXCLUDED



### Standard feet



- Pack of 4 feet.

Finished height	
H 30	H 45
H 35	H 50
H 40	
26 €	31 €

### Optional feet



#### P40

- Set of ø 65mm feet, cylinder  
- Natural varnish.  
- Pack of 4 feet.

Finished height	
H 33	
H 38	
H 43	
35 €	



#### P60

- Set of ø 65mm feet.  
- Natural varnish.  
- Pack of 4 feet.

Finished height	
H 28	
H 33	H 48
H 38	H 53
H 43	
33 €	40 €



#### Connections

- Central feet to connect single bases  
- Pack of 2 feet.

Finished height	
H 30	H 45
H 35	H 50
H 40	
32 €	36 €

steel

# Varial

**Anatomic slatted base for those who want quality and durability from an entry-level range.**

Varial like Super has been around for a long time and replies to the request of a more affordable slatted frame. Original patent slat holders carry multiply beech slats. Dorsal Varial comes in 6 variants.

- Steel frame 40x30mm
- Powder paint non-toxic and scratchproof.
- Multiply beech slats 63x8mm



190 / 195 / 200 cm

80  
85  
90

WITH ECONOMY MOTOR

550 €

FEET EXCLUDED

## Varial RA

- Single version adjustable with two motors.
- Complies with the Machine 2006/42/ CE Directive, appropriately labelled and comes with a user manual.
- Complies with Directive 2004/108/ CE on electromagnetic compatibility.

### Standard feet



- Pack of 4 feet.

Finished height	
H 30	H 45
H 35	H 50
H 40	
26 €	31 €

### Optional feet



- P40**
- Set of ø 65mm feet, cylinder
  - Natural varnish.
  - Pack of 4 feet.

Finished height	
H 33	
H 38	
H 43	
35 €	



- P60**
- Set of ø 65mm feet.
  - Natural varnish.
  - Pack of 4 feet.

Finished height	
H 28	H 48
H 33	H 53
H 38	
H 43	
33 €	40 €



- Connections**
- Central feet to connect single bases
  - Pack of 2 feet.

Finished height	
H 30	H 45
H 35	H 50
H 40	
32 €	36 €





## Varial GA

- Single version manually adjustable.



190 / 195 / 200 cm

80  
85  
90

260 €

FEET EXCLUDED



## Varial NA

- Single version.

190 / 195 / 200 cm

80	120
82	
85	
90	

114 € | 159 €

FEET EXCLUDED



## Varial FA

- Queen and King versions.

190 / 195 / 200 cm

140  
160  
165  
170

228 €

FEET EXCLUDED



## Varial MA

- Queen and King versions,  
no central beam, with standard  
central reinforced leg.

190 / 195 / 200 cm

140  
160  
165  
170

243 €

FEET EXCLUDED



## Varial SA

- Retractable with castors  
- fixing plate 5€

185 / 190 cm  
when flatten 9cm  
high

80

190 €

steel

## Accessories

Dorsal Sensity Full,  
be inspired by wellbeing



### Sensity Full technology

Dorsal **Sensity Full** gives the opportunity of controlling all the Move functions and also the **LED functions** available with the new remote.

Sensity Full can be applied to all Dorsal standard motor (**neither Energy Stop nor economy motor compatible**).

365 €

Sensity Move,  
the comfort in movement.



### Sensity Move Technology

Sensity Move controls all the motor-driven operations, memories, Home functions.

Sensity Move can be applied to all Dorsal standard motor (**neither Energy Stop nor economy motor compatible**).

265 €





### Vibro massage

This optional may be simply applied to the slats and can be programmed to increase or decrease the intensity, duration and area of action of the vibration a bestowing beneficial muscular relaxation given by a continuous massaging movement.

Vibro massage IR remote control also operates positions on the motorized versions (only exception for the models with an economy motor).

Vibro-massage is not available for the following ranges: Zefiro, XPoint 400 and 300.

345 €



### "Y"-shape cable

Cable with which two motors can be controlled from a single remote control.

67 €



### Wired remote control for motor

Used to activate the support motor.

30 €



### Infrared remote control

This device is used for remote control of the bed base motor.

Not applicable to economy motors.

165 €



### U-shape junction for single frames

- For steel and wood frames slatted bases
- 2 set kit

6 €



### Mattress side stoppers

Designed to give the mattress greater stability, even crosswise.

Available for the following models:

### Sintesi, Forma, Fisika e Forza.

XPoint, Advance, Energy and Dynamic have standard side stopper as part of Medical Device requirements.

15 € pair

### Energy Stop

Special device on the plug that cuts main power off at the socket, guaranteeing no energy flow to the motor, diminishing magnetic fields and granting a more relaxing sleep.

When ordering specify whether you require the motor complete with Energy Stop.

46 €



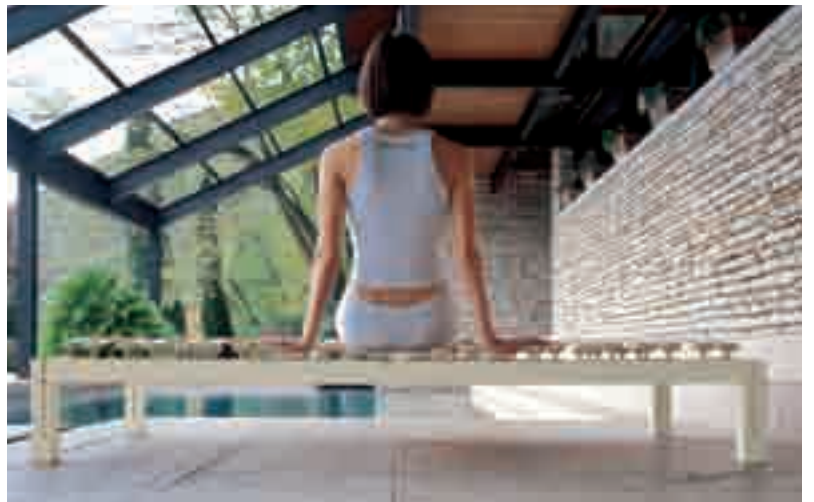


## les Bed

- 142. les Bed variants
- 144. les Bed headboards
- 147. Bedside tables and accessories



Leave the past behind: enjoy a natural and restoring sleep thanks to the new patented technology applied to the suspension of IES. You will feel as if you were floating in the water.



## Ies Bed

### **A technological core.**

Suspensions are the core of IES line: they are independent but mutually interact in adapting to any position of your body.

### **Lie down on IES.**

It will adjust to you and to your way of sleeping. IES: the natural way to restore your body and your mind.

### **Suspensions**

The patented suspension of IES has been awarded by the French ANVAR in the sector of technological innovation.



IES Base & Bed combines quality and design at high level to safely grant the individual's well-being as well as the harmony of the whole.

Total comfort is ensured by the combination with Dorsal top-quality mattresses, pillows and accessories, which makes the bed an oasis of wellness.

The comfort reaches the best when paired to Dorsal's mattress and pillow ranges. The bed becomes an island of wellness of premium quality.

Create a space without boundaries to open the horizon of your health.

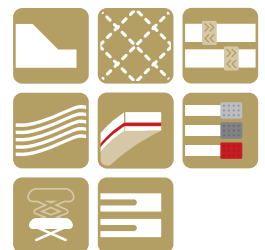


## les Bed Simple

- Single version.

90 x 200	120 x 200	170 x 200
530 €	710 €	1035 €

FEET EXCLUDED. SIZE IN CM.



## les Bed Matic RA

- Single version adjustable with two motors.

- Complies with the Machine 2006/42/ CE Directive, appropriately labelled and comes with a user manual.

- Complies with Directive 2004/108/ CE on electromagnetic compatibility.

120 x 200	170 x 200
2400 €	3100 €

FEET EXCLUDED. SIZE IN CM.



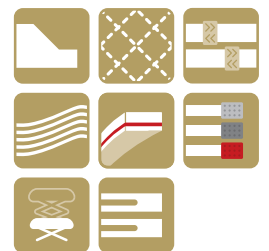


## les Bed Simple

with Onda headboard lacquered dove grey  
- single version.

90 x 200	120 x 200	170 x 200
875 €	1100 €	1495 €

FEET EXCLUDED. SIZE IN CM.



## les Bed Matic RA

with Onda headboard lacquered dove grey

- Single version adjustable with two motors
- Complies with the Machine 2006/42/CE Directive, appropriately labelled and comes with a user manual.
- Complies with Directive 2004/108/CE on electromagnetic compatibility.

120 x 200	170 x 200
2790 €	3560 €

FEET EXCLUDED. SIZE IN CM.



Cradle yourself in a natural sensation of wellbeing in a perfect combination of design and technology.



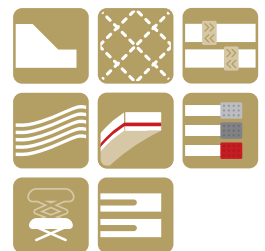


## les Bed Simple and Onda leather headboard

- single version.

90 x 200	120 x 200	170 x 200
1125 €	1350 €	1800 €

FEET EXCLUDED. SIZE IN CM.

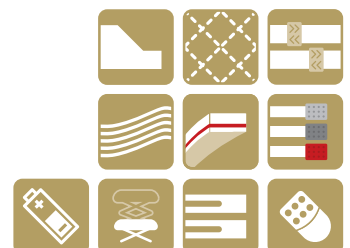


## les Bed Matic RA and Onda leather headboard

- Single version adjustable with two motors
- Complies with the Machine 2006/42/CE Directive, appropriately labelled and comes with a user manual.
- Complies with Directive 2004/108/CE on electromagnetic compatibility.

120 x 200	170 x 200
3040 €	3865 €

FEET EXCLUDED. SIZE IN CM.



The art of rest in perfect harmony with your life style.

## les Bed

Multi-layered beech frame 65x35 mm grey lacquered. Struktur beech slats 38x8 mm, size 120 cm 38x12 mm. Independent and interacting suspensions in Hytrel® material. Lumbar area with different shore (firmness) suspensions to respond with more rigidity and twelve adjustable cursors to personalise the comfort level, Dynaflex® slats.

Profiled slats on the shoulder area and shaped slats on the head and feet area. Motor adjustable version is certified, complies with the Machine 2006/42/CE Directive, it is appropriately labelled and comes with a user manual and also complies with Directive 2004/108/CE on electromagnetic compatibility.

The bed is delivered assembled and packed in a cardboard box. If you require non-standard sizes for the les Bed Simple and les Bed Matic models, see page 156.



### les Bed Simple

Queen and King versions.

### les Bed Matic RA

Queen and King versions.

## Headboards



### Onda headboard

Grey lacquered finishing  
- Comprehensive of all metal appliances.

91,5 x 34,8	121,5 x 34,8	173,0 x 34,8
<b>90</b>	<b>120</b>	<b>170</b>
345 €	390 €	460 €

FEET EXCLUDED. SIZE IN CM.

Size	Type of foot	Total bed height with headboard
90/120/170	<b>P21</b>	78,5
	<b>R20</b>	74,5

### Onda headboard leather finishing

Leather finishing  
- Comprehensive of all metal appliances.

91,5 x 34,8	121,5 x 34,8	173,0 x 34,8
<b>90</b>	<b>120</b>	<b>170</b>
595 €	640 €	765 €

FEET EXCLUDED. SIZE IN CM.

Size	Type of foot	Total bed height with headboard
90/120/170	<b>P21</b>	80,5
	<b>R20</b>	76,5

Leather headboard is available in :



Light brown

Dark oak

Moka

Navy blue



**Interactive and independent suspensions**

The progressive interactivity of the suspensions is certified and guarantee over time with the use of Hytrel material that has an elastic memory. Suspensions spring back proportionally and the wide flexing excursion ensures perfect body adaptability.

**Bedside tables and accessories**



**Reflex**

- Metal base, multiply beech table.

**Reflex:** H 40 - Ø 45cm  
**Reflex Basso:** H 35 - Ø 45cm

Lacquered Dove Grey	Leather covered
155 €	270 €



**Planet**

- Metal base, multiply beech table.

H 40 - Ø 45cm

Lacquered Dove Grey	Leather covered
167 €	280 €



**P21**

- Wood leg with aluminium insert  
 - Pack of 4 feet.

- Finished height: H33cm  
 Non-standard sizes are not available.

180 €
-------



**R20**

- castor legs with brakes  
 - aluminium finishing  
 - pack of 4 castors.

Finished height: H29cm Ø 12cm  
 Non-standard sizes are not available.

200 €
-------



## Pillows

- 150. Natur Memory
- 151. Grand Soleil Soft Care
- 152. Vitalay
- 153. Fibre



# Natur Memory



## Natur Memory

Good elasticity and the special structure of Natur Memory provide excellent support. By reacting to body heat **Natur Memory models itself to adapt perfectly to the natural curve of the cervical spine, distributing weight over the entire surface and relieving pressure points, cause to most strain. This ensures great comfort and relaxation in all positions.** Natur Memory returns gradually and constantly to its original shape after use, ensuring good performance over time.



Customize carryig bag for Therapeutic Soap and Contour pillows.

## Therapeutic Soap

Natur Memory pillow, now available also in standard soap shape, with special air channels that allow the pillow to provide comfortable massage, let the skin breathe and create a perfect microclimate.

- Nonallergenic and antibacterial.
  - Complete with 100% jersey cover.
  - Washable: completely hand or machine washable at 30° on delicate cycle.
- Dry in the shade away from heat sources.



70 x 40 x 10 <b>T10</b> (Small pillow case recommended)	70 x 40 x 12 <b>T12</b> (Large pillow case recommended)	Pillow cases (Small / Large)			
		Sleep Dry	Naturargento	Namboo	Thermic
84 €	84 €	25 €	29 €	29 €	34 €

SIZE IN CM.

## Therapeutic Contour

Natur Memory pillow, has been enhanced by new vertical air channels designed to provide even more comfort, allow the skin to breathe and create a fresh aired microclimate. The special shaping of this pillow with two levels relieves pressure on the neck and shoulders to give great comfort and relaxation in all the positions of sleep. Self-modelling and heat sensitive, due to its adaptability Therapeutic Contour ensures maximum relaxation for the cervical spine.

- Anatomical, nonallergenic and antibacterial.
  - Washable: completely hand or machine washable at 30° on delicate cycle.
- Dry in the shade away from heat sources.



DORSAL WELLBEING DEVICES: THERAPEUTIC CONTOUR IS AVAILABLE AS A MEDICAL DEVICE. SEE PAGE 154

70 x 40 x 8-10 <b>TH10</b> (Small pillow case recommended)	70 x 40 x 10-12 <b>TH12</b> (Large pillow case recommended)	Pillow cases (Small / Large)			
		Sleep Dry	Naturargento	Namboo	Thermic
89 €	89 €	25 €	29 €	29 €	34 €

SIZE IN CM.

# Grand Soleil Soft Care



Part of the Grand Soleil family, based on natural oils and water, thanks to **Soft Care open cell structure, makes pillows particularly breathable** and rapidly disperses humidity, ensuring a perfect microclimate. Soft Care is the only foam with a honeycomb structure **that ensures support and exceptional comfort sensations.**

## Energia Soap and Energia Baby

Grand Soleil pillow, Soft Care version, based on sunflower oil and water, guarantees even pressure distribution that makes the pillow particularly comfortable. With special surface cuts it provides a massage effect and excellent comfort.

Now available in Baby version.

- Odourless, fresh and nonallergenic.
  - Complete with 100% jersey cover.
  - Washable: completely hand or machine washable at 30° on delicate cycle.
- Dry in the shade away from heat sources.



70 x 40 x 13	70 x 40 x 15	55 x 30 x 5	Pillow cases (Small / Large)			
<b>E10</b> (Small pillow case recommended)	<b>E20</b> (Large pillow case recommended)	<b>E-BABY</b> (Sunflower pillow cover only)	<b>Sleep Dry</b>	<b>Naturargento</b>	<b>Namboo</b>	<b>Thermic</b>
57 €	57 €	22 €	25 €	29 €	29 €	34 €

SIZE IN CM.

## Energia Contour

Grand Soleil pillow, Soft Care version, based on sunflower oil and water, guarantees even pressure distribution that makes the pillow particularly comfortable. The special contour of this pillow, with two levels, relieves pressure on the neck and shoulders giving anatomical support and aiding relaxation.

- Anatomical, nonallergenic and antibacterial
  - Complete with 100% jersey cover
  - Washable: pillow completely hand or machine washable at 30° on delicate cycle.
- Dry in the shade away from heat sources.



70x40x6-8	70x40x8-10	70x40x10-12	70x40x12-14	Pillow cases (Small / Large)			
<b>EC10</b> (Small pillow case recommended)	<b>EC20</b> (Small pillow case recommended)	<b>EC30</b> (Large pillow case recommended)	<b>EC40</b> (Large pillow case recommended)	<b>Sleep Dry</b>	<b>Naturargento</b>	<b>Namboo</b>	<b>Thermic</b>
44 €	44 €	44 €	44 €	25 €	29 €	29 €	34 €

SIZE IN CM.



Customized carrying bag for Energia Soap and Contour pillows.

# Vitalay Latex



## Vitalay the excellence of latex.

The secret of Vitalay latex lies in the mix of natural ingredients and **the exclusive complex process known as Talalay.**

The result is a very open homogeneous round cell structure that gives the pillow unbeatable elasticity and perfect breathability.



Customized carrying bag for Azzurro pillow.

## Vitalay Azzurro

Vitalay latex, useful for alleviating and preventing cervical spine ailments. Its contour shape, with two differentiated levels and soft ribbing, provides relaxing massage, deeper in the cervical spine zone and more delicate on the face.

- Non-deforming, antibacterial and nonallergenic.
- Complete with 100% jersey cover.
- Washable: pillow completely hand or machine washable at 30° on delicate cycle. Dry in the shade away from heat sources.



**DORSAL WELLBEING DEVICES:**  
VITALAY AZZURRO  
IS A MEDICAL DEVICE. SEE PAGE 154.

70 x 40 x 8-10 <b>Low</b> (Small pillow case recommended)	70 x 40 x 10-12 <b>High</b> (Small pillow case recommended)	Pillow cases (Small / Large)			
		<b>Sleep Dry</b>	<b>Naturargento</b>	<b>Namboo</b>	<b>Thermic</b>
95 €	95 €	25 €	29 €	29 €	34 €

SIZE IN CM.

## Vitalay Nido

The quilted pillow case is filled with 100% exclusive Vitalay chips. The special shredded filling allows air to circulate freely and naturally through the pillow, giving it breathability.

- Antibacterial, nonallergenic and featuring excellent elasticity.
- Complete with 100% jersey cover.
- Washable: pillow completely hand or machine washable at 30° on delicate cycle. Dry in the shade away from heat sources.



75 x 45 cm (Large pillow case recommended)	Pillow cases (Small / Large)			
	<b>Sleep Dry</b>	<b>Naturargento</b>	<b>Namboo</b>	<b>Thermic</b>
45 €	25 €	29 €	29 €	34 €

SIZE IN CM.



Packed in a nylon bag.



# Fibre

Dedicated to those who appreciate natural products and want to enjoy the benefits of cotton. Besides aiding natural body breathing, it guarantees constant ventilation; the skin remains fresh and perfectly dry so that sleep truly restores.

A 100% natural pillow that is also absolutely nonallergenic due to bitterness intrinsic to the fibres that keeps dust mites and moths away. It is also hygroscopic: as it does not hold humidity no warm-damp climate forms inside, a real advantage for those suffering from rheumatism or arthritis.

This pillow features a latest generation microfiber with "slow return" that provides it with self-modelling characteristics. It is hygienic, antibacterial and nonallergenic. The filling allows free natural air circulation that ensures normal breathing.

## Fibre Soffio

- 100% cotton, ecological material certified by Oeko Tex Standard 100.
- 100% cotton fabric pillow case.
- Sanfor anti-shrink treatment.
- Dry clean only.

## Fibre Bio

- 100% kapok vegetable fibre.
- 100% cotton fabric pillow case.
- Sanfor anti-shrink treatment.
- Dry clean only.

## Fibre Abbraccio

- Self-modelling 100% polyester Slow Release microfiber.
- 100% cotton fabric pillow case.
- Sanfor anti-shrink treatment.
- Dry clean only.



Packed in a nylon bag.

50 x 80	50 x 80	50 x 80	Pillow cases (Small / Large)			
Soffio (Large pillow case recommended)	Bio (Large pillow case recommended)	Abbraccio (Large pillow case recommended)	Sleep Dry	Naturargento	Namboo	Thermic
53 €	43 €	43 €	25 €	29 €	29 €	34 €

SIZE IN CM.

## Pillow cases

Pillow cases available in Small and Large sizes. Dorsal pillow cases come with a convenient zip and can be used with any type of pillow.



<b>SleepDry - breathable and fresh</b>	<b>Naturargento - nonallergenic</b>	<b>Namboo - 100% natural</b>	<b>Thermic - heat regulating</b>
Pillow case made in the revolutionary Sleep Dry fabric that keeps the pillow dry, creating the ideal conditions for perfect sleep. Machine washable at 60°C.	Pillow case made in Tencel®, a fabric in silver thread and silver ion particles. Naturargento is a real "bodyguard" against bacterial contamination of the pillow. Machine washable at 60°C.	Pillow case in a natural fabric made of bamboo fibre and 100% cotton. The wonderful qualities of bamboo fibre and cotton merge in Namboo and the result is a pillow case with extraordinary natural characteristics: breathable, healthy and nonallergenic due to our Green First dust mite repellent treatment. Hand or machine washable at 30° on delicate cycle.	Pillow case made of Thermic, the elegant fabric with a technological heart. Adapts dynamically to body temperature and offsets any excess heat or perspiration due to a natural treatment based on vegetable extracts. Machine washable at 60°.
Small / Large	Small / Large	Small / Large	Small / Large
25 €	29 €	29 €	34 €



European Directive 2007/47/CE  
concerning Medical Devices

## Medical Device

Medical Device means "... any instrument, appliance, equipment, substance or other product used alone or in combination, including software employed in its operation and intended by the manufacturer to be used on humans for the purpose of: diagnosis, prevention, control, therapy or to attenuate an illness; [...] the main action of which in or on the human body is not pursued with pharmaceutical or immunological means..."\*.

## Wellbeing

*Wellbeing (n. wéll bée ing)*

- *the state of being healthy, happy and comfortable: to feel a sense of well being; exercises that assist corporal wellbeing (Encarta).*

## Mattresses

Dorsal® Medical Device mattresses are anatomical, with seven differentiated zones of firmness which ensure greater adaptation to the body contours and the different weight. This provides better alignment of the spine and also guarantees good quality life for biological tissues and therefore good sleep. Dorsal® Medical Device mattresses come **exclusively with Naturargento Cotton covers in Tencel® natural fibre** made from tree cellulose and silver threads with anti-static and antibacterial properties. They all have removable washable covers.

- Zefiro 108 Memory
- Antares
- Étoile
- Paradise
- Divine
- BodyCare

## Anatomical supports

In a quality bed system the anatomical support is essential for good mattress performance and to support the entire structure. Dorsal® Medical Device anatomical supports are available in flat single NA or queen/king FA versions, as well as manually adjustable GA, and motor adjustable RA. Movements assist the position of the lower limbs and permit the trunk and head to recline, providing balanced strain distribution over the entire spine without overloading or overstretching any part.

- XPoint 200 - 300 - 400
- Energy
- Advance
- Dynamic, except for models DRA and DGA

## Pillows

Dorsal® Medical Device pillows are designed to influence proper alignment of the spine, especially the cervical zone, ensuring high quality sleep with fewer changes of position during the night, reduced discomfort on awakening and more relaxed rest.

- Zefiro Cervicale 72 x 40 x 9-11cm
- Therapeutic 70 x 40 x 8-10cm
- Cervicale 70 x 40 x 10-12cm
- Azzurro 70 x 40 x 8-10cm  
70 x 40 x 10-12cm

## Covers

- Naturargento Cotton

Only with mattresses: Zefiro 108 Memory, Antares, Étoile, Paradise, Divine, BodyCare.




### User's guide and care instructions

All mattresses, anatomic supports and pillows which are Medical Device come with a specific booklet with medical reference, technical data, fitting instructions, use and maintenance.

## Washable fabrics

Always sleep in a clean fresh bed.

All Dorsal mattresses come with a fully removable washable covers to ensure perfect hygiene that makes for healthy sleep.

Covers	60°	30°
		
Thermic Air Flow	•	
Thermic Klima	•	
Thermic Sensitive	•	
Naturargento SC	•	
Naturargento Cotton	•	
Namboo Summer/Winter		•
Namboo Sensitive		•
Sleep Dry SC	•	
Sleep Dry Cotton	•	
Green Cotton	•	
Melange	•	
UP	•	
BabySol	•	

## Mattress standard Cardboard packing

All Dorsal mattresses are despatched in cardboard boxes.

This also applies to slatted bed bases: Zefiro, XPoint 200-300-400, IES Bed and IES Base and all motorized anatomical supports.



## Non-standard sizes

### Mattresses

Non-standard sizes can be provided for all models up to the maximum dimensions shown in the table below.

GRAND SOLEIL					VITALAY
Zefiro	Antares	UP	Play	BabySol	Sublime
Vega	Étoile				Paradise
Soleil	Matrix				Divine
Elios					Body Care
Sirio					
180 X 220	170 X 200	180 X 200	120 X 200	70 X 140	180 X 220

For intermediate sizes, consider the price for the next size up.

Vertical quilting for covers over 205 cm in length

Any joints on the core do not affect the quality of the product. Tolerance +/- 2 cm.

### Wooden anatomical supports

Non-standard sizes are available on all models up to the maximum dimensions shown in the table below:

XPOINT - ADVANCE - SINTESI - FORMA - VIVA		ENERGY - SANA			
NA - GA - RA	FA	NA - GA - RA	FA	FRA - FGA	MA
90 X 210	180 X 210	120 X 220	180 X 220	180 X 220	170 X 220

### Steel anatomical supports

Non-standard sizes are available for all models up to the maximum dimensions shown in the table below:

SUPER - VARIAL			DYNAMIC - FISIKA - FORZA	
NA - GA - RA	MRA - MGA - MA	FRA - FGA - FA	NA - GA - RA	FA
120 X 230	170 X 210	180 X 230	120 X 210	180 X 210

# General conditions of sale

## Complaints

Any damage caused in transit must be described on the delivery note on receiving the goods and signed by the driver. Any other complaints shall be accepted only if notified within 8 days of receiving the goods, and shall be inspected by the local agent. Goods cannot be returned or replaced without the written authorization of Dorsal.

Beds and accessories are made of plywood and solid wood: grains, visible knots and slight differences in colour prove that quality raw materials have been used. No complaints will be accepted regarding this aspect.

Mattresses: measurements are made according to UNI EN 1334. Any complaints regarding dimensions should be based on measurements taken in compliance with such standards.

## Payment

Payment beyond due date: interest will be charged at the current bank rate. Dorsal reserves the right to take back the consigned products if the total amount is not paid.

## Validity

This price list is valid from 04.04.2011 and annuls and replaces all previous ones.  
Prices are to the public, in euros, VAT excluded.

Dorsal declines all liability for any mistakes or wrong indications that may appear in this price list.  
Dorsal reserves the right to make technical, aesthetic and functional modifications for the purpose of continuous improvement in product quality, functionality and features, without notice.

Any controversy shall be settled by the Court of Treviso in if not stated differently in private agreement.





**Dorsal s.r.l.**

via Madonna di Loreto, 3  
31020 Corbanese (TV) Italy

T. +39 0438 933 003

F. +39 0438 933 023

[info@dorsal.it](mailto:info@dorsal.it)

[www.dorsal.it](http://www.dorsal.it)

Progetto [ovostudio.it](http://ovostudio.it)  
Fotografia [studiovisus.com](http://studiovisus.com)  
Stampa [eprinting.it](http://eprinting.it)